



DOUBLE DEGREE PROGRAM

In collaboration with MNU South Korea, Department of Naval Architecture ITS has created a double degree program designed to prepare top class naval architects.



DEPARTMENT OF NAVAL ARCHITECTURE (DoNA)

ITS  - MNU 



Mokpo National University - Main Campus



Institut Teknologi Sepuluh Nopember



**First Visit of MNU Delegation
at ITS**

[Surabaya, August 31, 2017]



**MoU Signing Ceremony between
MNU and ITS at MNU Campus**

[Mokpo, November 16, 2017]



**MoA Signing Ceremony between
ITS and MNU at ITS Campus**

[Surabaya, April 4, 2018]



HYUNDAI Shipbuilding



DoNA ITS Hydrodynamics Laboratory



Students Graduations Procession

At present, MNU is one of the universities that **plays a big role** in making Korea as the largest ship producing country in the world. ITS has the best naval architecture department in Indonesia and in the future **Indonesia will emerge as one of the biggest ship building countries** in the world.



SPUB PUSRI Designed by DoNA ITS's Alumni



MNU's Hydrodynamics Laboratory



New Ocean Industrial Complex, MNU Campus

Focus in Maritime

ITS & MNU focus on cultivating intellectuals who will have not only the leadership for new maritime culture, but also the knowledge of marine technology.

World Class Facilities

ITS & MNU are equipped with modern laboratory facilities, such as hydrodynamic laboratory and state of the art mechanical laboratory.

Green Eco Campus

ITS & MNU provide wide green open spaces and educational environments that support long life education.



Internship Students in Korea's Shipyard

Students will study...

- the first 6 semesters at ITS
- the last 2 semesters at MNU (Including final year project and internship in a Korea's shipyard)



Graduation of P-51 (2011) DoNA ITS

Graduates will receive 2 degrees:

- **Sarjana Teknik (S.T.)** from ITS
- **Bachelor of Engineering (B.Eng.)** from MNU.



Student Centered Learning



Final Year Project Seminar

Credit composition:

ITS
82 credits

MNU
63 credits

Total: 145 credits (39 courses)

Preparation Phase (36 credits) – Conducted in ITS Campus

- | | |
|--------------------------------------|-------------------------|
| 1. Mathematics | 8. Mathematics |
| 2. Physics | 9. Physics |
| 3. Chemistry | 10. Religion |
| 4. Pancasila | 11. Nation Building |
| 5. English | 12. Bahasa Indonesia |
| 6. Introduction to Marine Technology | 13. Fluid Mechanics |
| 7. Engineering Drawing | 14. Basic Ship Theory I |

Undergraduate Phase (108 credits) – Conducted in ITS Campus

- | | |
|--|--|
| 1. Computer Programming
(Summer Vacation 20 June) | 14. Knowledge and Application of Technology |
| 2. Computer-Aided Drawing
(Summer Vacation 20 June) | 15. Korean Language 2 (Online) |
| 3. Korean Language 1 (Online) | 16. Principle Design of Ships
(Summer Vacation 20 June) |
| 4. Basic Ship Theory II | 17. Construction Engineering
(Summer Vacation 20 June) |
| 5. Mechanics of Materials I | 18. Statutory Regulation |
| 6. Material Science and Mechanics | 19. Ship Design |
| 7. Ship Structure and Strength I | 20. Technopreneurship |
| 8. Mechanics of Materials II | 21. Production Engineering
(Summer Vacation 20 June) |
| 9. Ship Structure and Strength II | 22. Special Issues in NAOE (SV 20 June) |
| 10. Ship Resistance | 23. Ship Dynamics |
| 11. Welding Technology | 24. Ship Structure Design |
| 12. Lines Plan | 25. Ship Hydrodynamics |
| 13. Marine Engineering | |



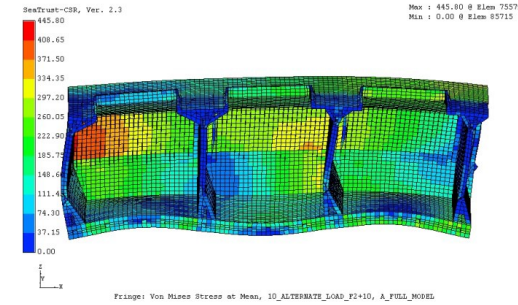
Lectures given by
ITS lecturer



Lectures given by
MNU lecturer

Undergraduate Phase (108 credits) – Conducted in MNU Campus

26. Structural Analysis
27. Production Design of Ship Structures
28. Production Design of Outfitting
29. Special Issues in Marine Hydrodynamics
30. Experiment for Materials and Welded Joints
31. Vibration and Noise
32. Yard Practice for Ship Design (Winter Vacation)
33. Yard Practice for Ship Production (Winter Vacation)
34. Capstone Design
35. Production Management and Quality Control
36. Process Design in Ocean Engineering
37. Propeller Design
38. Ocean Energy Engineering
39. Sail Yacht Design

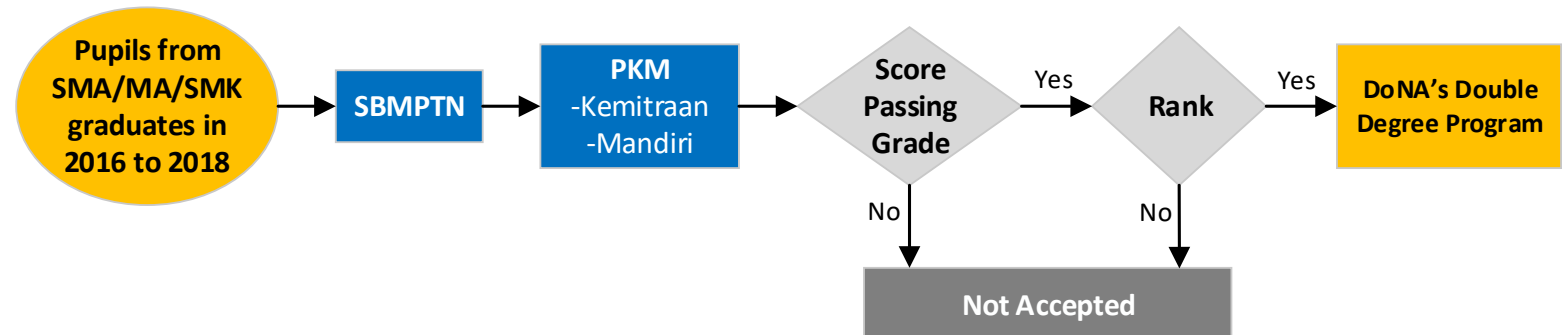


Students Conducting Research
and Learn About Shipbuilding
Industry in Korea.





The students will be charged for **20 million rupiahs** for tuition fee per semester.



[For further information: na.its.ac.id/page.php?Pendaftaran]



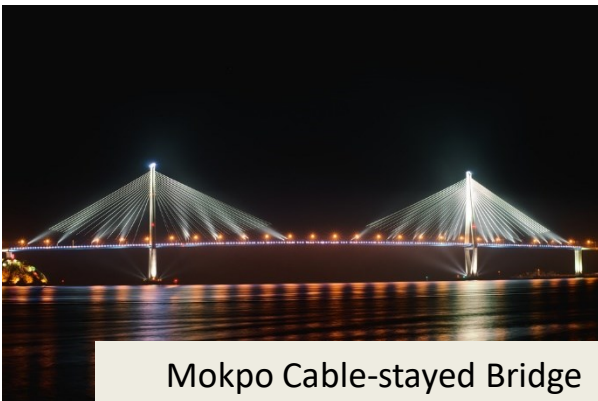
Tourist Attractions in Mokpo



Place of Worship in Mokpo



Korean Pop & Traditional Culture



Mokpo Cable-stayed Bridge



Boarding House Room in Mokpo



Mokpo Culinary



Mokpo at Night



Religious Atmosphere



ITS Student Dormitory



Surabaya Icon



Tourist Attractions in Surabaya



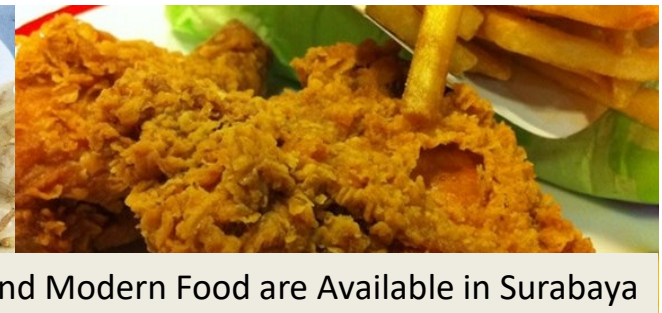
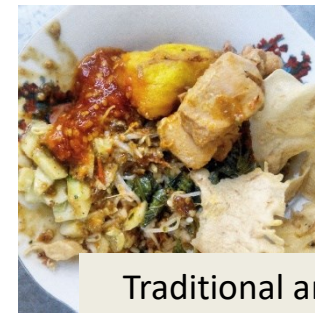
Boarding House



Low Budget Apartment



Various Cafes



Traditional and Modern Food are Available in Surabaya

Established March 2, 1995

Member Faculties 14

Undergraduates Abt. 250

Graduates Abt. 30

Facility

- Various types of experimental equipment for structural bending, tensile and fatigue stress test with low temperature chamber
- 2-dimensional basin
- Circulating water channel

Software

- Aveva Marine CAD System
- NAPA, PATRAN, ANSYS
- Various software for analysis in the domain of naval architecture and ocean engineering

Campus Dorim (main) Campus

- For 1st and 2nd grade students
- Lessons for engineering basis1 and basic courses in naval
- architecture and ocean engineering
- 9 laboratories for graduate students

New Ocean Industrial Complex Campus

- For 3rd and 4th grade students
- Lessons for advanced courses in naval architecture and ocean engineering
- Research with industrial-friendly projects
- 7 laboratories for graduate students



Building B26 in Dorim Campus

- 5 lecture rooms
- 2 computer rooms
- 9 laboratories



New Ocean Industrial Complex Campus

- 9 lecture rooms
- 3 computer rooms
- 7 laboratories