



DOUBLE DEGREE MASTER PROGRAM

The Master's Double Degree in Marine Transportation Engineering ITS – Hochschule Wismar is a joint program between Institut Teknologi Sepuluh Nopember (ITS) and Hochschule Wismar, Germany, conducted over two (2) years.

#1st year

- At ITS (Offline)
- English Course in collaboration with English First (EF)
- German Language Course (Basic)

#2nd year

- At Hochschule Wismar (Offline)
- Thesis
- Field Trip & Field Project

SELECTION TIMELINE

1

May - July 2026
Registration Deadline

2

June - August 2026
Entrance Exam

3

July - August 2026
Announcement

4

August 2026
Re-registration

5

August - September 2026
Start of Semester

GENERAL REQUIREMENTS

- Bachelor's Degree graduates with GPA ≥ 3.00 from an accredited S-1/D-IV study program (minimum accreditation B), with the following educational backgrounds:
 1. D4 Nautical Science, D4 Marine Engineering, D4 Shipping/Port Management/Marine Transportation, D4 ETO, or B-Level Degrees: Nautical and Marine Engineering (Shipping Companies)
 2. S1 Naval Architecture
 3. S1 Marine Transportation Engineering
 4. S1 Civil Engineering
 5. S1 Architecture
 6. S1 Informatics Engineering
 7. S1 Industrial Engineering
- TOEFL ITP/Paper-Based score ≥ 500 and TPA (Academic Potential Test) score ≥ 450
- Two online recommendations from:
 1. Employer/Institution leader (for those already employed), or
 2. Undergraduate academic advisor/lecturer
- Successfully pass all ITS selection stages:
 1. Administrative Selection
 2. Field Competency Selection
 3. Final Selection & Interview

SPECIFIC REQUIREMENTS

- Entering the second year at Hochschule Wismar, students must:
 1. Pass all courses in the first year at ITS
 2. Obtain TOEFL iBT ≥ 90 or IELTS ≥ 6.0
 3. Prepare a resume and a copy of passport

i Information

Department of Marine Transportation Engineering
SEA Building, 2nd Floor, Jl. Teknik Kimia, ITS
Campus, Sukolilo, Surabaya, Indonesia 60111



Public Relation: +62 821 3944 8654 | (031) 596 1504
seatrans@its.ac.id



ITS
Institut
Teknologi
Sepuluh Nopember



DOUBLE DEGREE MASTER PROGRAM

TEKNIK
TRANSPORTASI LAUT

Institut Teknologi Sepuluh Nopember (ITS)
Wismar University of Applied Sciences



OVERVIEW

**Marine Transportation Engineering ITS
Operation and Management of Maritime
Systems Hochschule Wismar**

- Institut Teknologi Sepuluh Nopember (ITS) – Department of Marine Transportation Engineering, the first higher education institution in Indonesia specializing in marine transportation engineering. Its Master's Program has received the accreditation rating **"BAIK SEKALI"** based on LAM Teknik Decree No. 0168/SK/LAM Teknik/AM/IV/2025, dated April 21, 2025.
- Hochschule Wismar – Located in Rostock, Germany, Hochschule Wismar is a University of Applied Sciences focusing on engineering, economics, and design, utilizing modern teaching methods.

FOCUS AREAS OF COMPETENCE

01 Maritime Traffic and Shipping

Plan, manage, and implement policies related to shipping business and operations, navigation, vessel traffic, and route modeling.

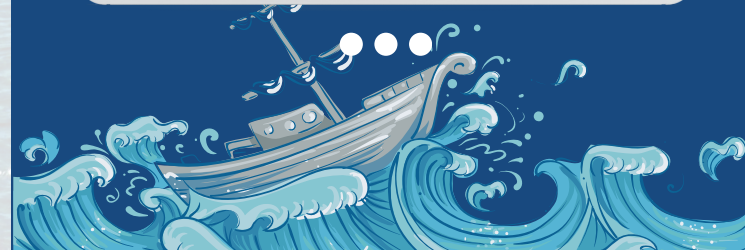
02 Maritime Port and Logistics

Plan, manage, and implement policies for port business and operations, including development of port infrastructure and facilities according to international standards.

03 Maritime Administrative and Authority

Plan, manage, and implement policies related to maritime safety and security, including vessel seaworthiness and crew certification.

Initiation of ITS–Hochschule Wismar Collaboration Program



DOUBLE DEGREE MASTER PROGRAM IN MARINE TRANSPORTATION ENGINEERING

