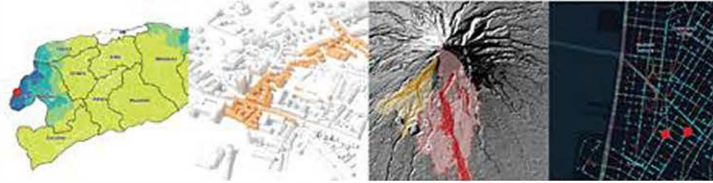


# POSTGRADUATE PROGRAM URBAN AND REGIONAL PLANNING

Faculty of Civil, Planning, and Geo Engineering  
[smits.its.ac.id/pascasarjana/#pascasarjana](https://smits.its.ac.id/pascasarjana/#pascasarjana)



## AREAS OF EXPERTISE



Regional Planning    Urban Development    Disaster    Transportation and Spatial Analysis

## LABORATORY

### Transport and Spatial Analysis Laboratory

The concentration of research and studies carried out by the Laboratory is more focused on spatial modelling, risk and disaster management systems, and the development of modeling systems, which among others assist in conducting analysis in the planning process.



### Design and Urban Development Laboratory

The Urban Development & Design Laboratory is a forum for interaction between academics, both lecturers and students, who have interests and areas of expertise in urban development & urban design.



### Regional, Coastal and Environmental Development Laboratory

Regional, Coastal and Environmental Development Laboratory is a forum in the field of study that integrates planning and development of coastal areas. In addition, the coastal area is also one of the spearheads of ITS's main focus as a maritime campus.



## PWK SCHOLARSHIP SCHEME

### Fresh Graduate Scholarship

- Postgraduate Admission for batch 1 & 2
- Undergraduate students will graduate (Sept. 2022) OR have graduated (Mar. 2022 and Sept. 2021)
- GPA min. 3.25; TPA min. 450; TOEFL min. 477
- The maximum study period is 10 semesters
- Undergraduate program according to the field

### Fast-Track Scholarship

- Postgraduate Admission batch 2
- Intended for ITS students who want to start studying Masters together with undergraduate courses in semesters 7 and 8.
- Students at the end of semester 6:
  - Passed min. 120 credits
  - GPA min. 3.25
  - TOEFL min. 477

## LIST OF COURSES

### Semester I

- Urban and Regional Planning Theory and Systems
- Public Policy
- Planning Information System
- Urban and Regional Planning Analysis Techniques
- Sustainable Development

### Semester II

- City Management Theory
- Smart City
- Urban Infrastructure Management
- Land Management
- Urban Economy and Finance

### Semester III & IV

- City Management Studio
- Seminar
- City Development Laws and Institutions
- Thesis

### Elective courses

- Management of Coastal Zone and Small Islands
- Regional Development: Regional Development Management
- Risk and Disaster Management
- Transportation Management
- Geographical Transportation
- Decision Support System (DSS)
- Conflict Management

## OFFERED CLASS

- Regular
- Distance Education (PJJ)
- ITS Scholarships

## DARING EDUCATION

### DARING EDUCATION REGULAR

- Students come from outside the region
- Online lectures follow a regular schedule

### DARING EDUCATION COLLABORATIVE

- A group of agency employees
- Executed separately or following regular

### DARING EDUCATION PROFESSIONAL

- A group of agency employees
- Lectures are held outside of working hours

### DARING EDUCATION EXECUTIVE

- Own initiative or a group of agency employees
- Classes are held on weekends