

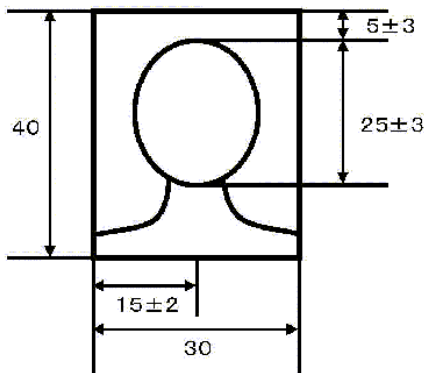

[About Us](#)
[Publications](#)
[Applications and Procedures](#)
[Residency Support](#)
[Contact Us](#)
[Laws](#)
[Policies and Statistics](#)
[TOP](#) [Applications and Procedures](#)
[Guide to immigration procedures](#)
[Procedures for immigration examination and residence examination](#)
[Procedures for residence examination](#)
[Photograph requirements](#)

Photograph requirements

The photograph submitted with each application should meet the following requirements.

Examples of both appropriate and inappropriate photographs have been provided for reference, so please ensure that all submissions meet the standards.

(mm)



Photograph size

4 cm long, 3 cm wide

The photograph must contain only the applicant.

The dimensions of the photograph must meet those shown on the left (excluding the edges).

(The dimensions of the face are measured from the top of the subject's head (including their hair) to the tip of their chin.)

The applicant must face the camera and cannot wear a hat.

There must be no background (including no shadow).

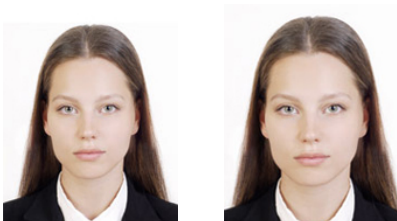
It must be a clear photograph.

It must be taken within three months of the date of submission.

The applicant's name must be written on the back.

Examples of appropriate photographs

These photographs meet all of the requirements listed above and show the subject clearly.



Examples of inappropriate photographs

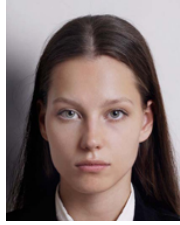
Photographs that do not meet the specifications listed above.



Subject is not centered



Subject's face is turned



Shadows in the background



Subject is leaning

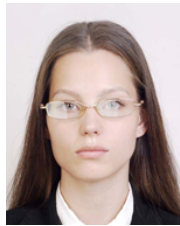
Photographs where the face is partially obscured.



Subject's glasses are obstructing their eyes



The frames of the subject's glasses are too thick



Subject's glasses are reflecting light



Subject's face is partially hidden by a mask



Subject's hair is partially covering their eyes

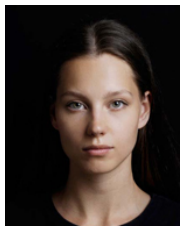


Subject's head covering is casting a shadow
(Note) Head coverings are allowed provided that the applicant's face is clearly visible.

Photographs where it is difficult to identify the person.



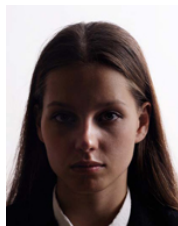
Subject's expression is not neutral



Subject's facial contours are obscured by a dark background



Subject is blurry or out of focus



Subject's face is obscured by shadows

About Us

- Outline of the Immigration Services Agency of Japan
- Regional Immigration Services Bureaus
- Relocation and Consolidation of Government Offices [JP]
- Public relations

Contact Us

- Information Centers & One-Stop Consultation Centers
- Report fraud

Publications

- Press Releases
- Latest Information
- Publication materials
- Other Publications [JP]

Laws

- Laws and regulations

Applications and Procedures

- Procedures related to the Immigration Control and Refugee Recognition Act
- Guide to immigration procedures
- Information disclosure
- Personal information protection
- Archives management

Policies and Statistics

- Immigration Control Policies and White Papers
- Specified Skilled Worker Program
- Foreign national coexistence policies

Residency Support

- Portal Site for Daily Life Support for Foreign Residents [JP]
- Foreign Residents Support Center (FRESC)

[Top of page](#)

[Statistics](#)

[Public consultations](#)



Immigration Services Agency of Japan

100-8973 1-1-1 Kasumigaseki, Chiyoda-ku, Tokyo
+81-3-3580-4111 (Representative)
The Number of Corporation: 7000012030004

[Sitemap](#)

[Links and copyrights](#)

[Request for disclosure of immigration records](#)

Copyright © Immigration Bureau of Japan All Rights Reserved.