

MSc Maritime Economics and Logistics

Advancing the future leaders of the maritime sector



Welcome

The MSc in Maritime Economics and Logistics (MEL) is a unique, postgraduate/post-experience international programme offered by one of the world's top universities, at the shipping, transport and logistics heart of Europe, aimed at advancing promising young professionals into the future leaders of the maritime sector.

Rotterdam is among the world's largest ports, and, by far, the undisputed European champion, as a global maritime hub. By general recognition, the Netherlands, the gateway to Europe, is at the forefront of innovation in transport and logistics. The country's shipping policy offers companies one of the most attractive business environments in Europe, successfully challenging all traditional shipping centers. Erasmus, Rotterdam's own university, is at the very center of all this, distilling the country's knowledge infrastructure in its MSc Course in Maritime Economics and Logistics.

MEL is the only course of its kind that combines shipping, ports, terminal management, and maritime logistics in the academic environment of two of Europe's top Schools: The Erasmus School of Economics and Rotterdam School of Management. Along with academic excellence, MEL strives to achieve a fine balance between theory and practice to enhance the competitive edge of MEL students. This is assured by the involvement of our Corporate and Alumni Network. Through guest lectures, seminars and company visits, MEL students are continuously confronted with the pre-conceptions of 'conventional wisdom' and learn how to place them in their proper and wider economic perspective. These extra features not only provide you the opportunity to understand the maritime sector in the real world but also offer you the opportunity to network. As such, our Corporate and Alumni Network could be a useful tool for MEL students in pursuing employment opportunities.



I hope you will find the information in this brochure useful and interesting and I look forward to welcoming you to Rotterdam and to our University.

Prof.dr. E.A. de Groot





Programme Overview

The MEL Programme is designed to give you outstanding qualifications and to provide you with a wide array of both subject-specific and transferable skills so that you can experience prospects for desired positions and (re)boost your career in the Maritime and Logistics industry.

Through the MEL Programme you will gain an understanding of shipping, ports, terminal management, maritime logistics, supply chain management and shipping finance. Following extensive industry consultation, MEL has compiled a curriculum of 15 modules. The modules compose a holistic and tightly knitted, integrated, approach to the understanding and analysis of global maritime supply chains of production-transport-distribution, where ocean transportation and port and terminal management play a pivotal role.

Core Courses

- Economics
- Statistics and Econometrics
- Research Methodology
- Transport Economics
- Port Management
- Marine Technology and Innovation
- Maritime Logistics
- Shipping and Transport Finance
- Maritime Law
- Management Science
- Logistics and Supply Chain Management
- International Economics
- Shipping Economics and Policy
- Sustainability
- Management

KEY FACTS

Duration of Programme:

- 12 months full-time
- 24 months part-time (only applicable for those eligible to work in the EU)

Eligibility requirements:

- Relevant bachelor degree or (exceptionally) equivalent professional experience
- Demonstrated proficiency in the English language (IELTS: 6.5, TOEFL: 90)

HOW TO APPLY

You can apply online at: <http://maritimeeconomics.com/applicants/online-application-form/>

The MEL Programme is set up in blocks of three weeks during which you will follow three courses. The last part of the programme is dedicated to thesis and graduation. The thesis is a major part of the MEL curriculum. Its objective is to enable students to apply the knowledge acquired in the course, through the methodological analysis of an applied maritime problem.

PART ONE OCT-DEC

The first part starts with a week of introduction to MEL, Erasmus University Rotterdam, and the Netherlands. Then the real work starts and you will complete blocks 1-3 which consist of the following courses:

- Economics
- Statistics
- Marine Technology and Innovation
- Research Methodology

PART TWO JAN-MAR

The second part consists of four blocks (blocks 4-7), and a trip abroad. The courses you will follow are:

- International Economics
- Maritime Logistics
- Shipping Economics and Policy
- Transport Economics
- Sustainability
- Management Science

PART THREE APR-JUL

In the third part you will complete the final blocks (blocks 8-11). You will choose one of two minors, Port Management or Maritime Logistics which will determine the third course for each block. The courses in part three are:

- Logistics and Supply Chain Management
- Port Management
- Shipping and Transport Finance
- Maritime Law
- Management





Professional Development & Careers

The MEL Programme puts a strong focus on extracurricular activities to provide students with the chance to further develop themselves and their network. Beyond what is offered at MEL, as a MEL Student you will also be a member of an organization of maritime professionals.

Professional Development Courses short intensive seminars offered in partnership with external organizations.

- Project Management
- Carrier Operations
- BIMCO
- Chartering and Shipbroking (ICS)

Company Visits organized in the Netherlands and abroad, they offer the opportunity to see how theory is applied in practice and offer handles for future career moves.

- Port of Rotterdam
- Maersk
- Royal Haskoning DHV
- Stolt Nielsen
- Damen Shipyards
- Vopak

Alumni Lecture Series open lectures by MEL Alumni which provide the students with the opportunity to interact with MEL Alumni, who are now active professionals, and learn about how MEL advanced their career and the opportunity to enhance their network

Distinguished Lecture Series open seminars by prominent business executives giving the opportunity for students to test their knowledge against that of an active professional and network with high level executives.

While studying at MEL you will also have access to Career Services such as CV check, LinkedIn Workshop, and Interview Training. MEL graduates have taken up opportunities across a range of employers and in various position both in the Netherlands and abroad.

Companies that have recruited MEL Students in recent years

- ABN Amro
- Ace Tankers
- Amsterdam Trade Bank
- APM Terminals
- Boskalis
- Breadbox Shipping Lines
- Cargill
- China Shipping Group
- CMA CGM
- Damen Shipyards
- Dockwise
- DP World
- DVB Bank
- Ecorys
- Eneco
- Evergreen Line
- Hapag-Lloyd
- Kuehne + Nagel
- Maersk
- Mitsui O.S.K. Line
- Mediterranean Shipping Company
- The Odin Marine Group
- Royal HaskoningDHV
- Safmarine
- Samskip
- Samsung
- Shell
- Smit Lamnalco
- Stolt Nielson
- TNT
- Unifeeder
- Vopak

Positions held by MEL Alumni in recent years (modest selection below)

- Business Analyst
- Chartering Director
- Forwarder
- Ship Broker
- Investment Banker
- Ship Manager
- Logistics Analyst
- Sales Manager
- Head of Marine Transportation & Logistics
- Regional Commercial Manager
- Naval Architect & Marine Engineer
- General Director of Maritime Affairs
- Maritime Economist
- Derivatives Trader
- Port Operations Manager
- Executive Board Director
- Consultant
- Voyage Coordinator
- Junior Officer
- Cargo Operator
- Project Analyst
- Business Intelligence Analyst
- Researcher
- Procurement Analyst
- Chartering Broker
- Freight Trader
- Managing Director
- Shipping Manager
- Director of Logistics
- Line Manager

GOOD TO KNOW

Non-EEA nationals who have earned a diploma from a higher education institute in the Netherlands have the opportunity to stay in the Netherlands for a year after completing their studies to look for work. The residence permit orientation year for highly educated persons can be submitted within 3 years after completing the studies. This scheme gives those graduated in the Netherlands the opportunity to first return to their country of origin and to then come back again to the Netherlands. During the year you have free access to the Dutch labor market and your employer does not need to apply for a work permit. When your orientation year is over, you will need to change your residence permit.

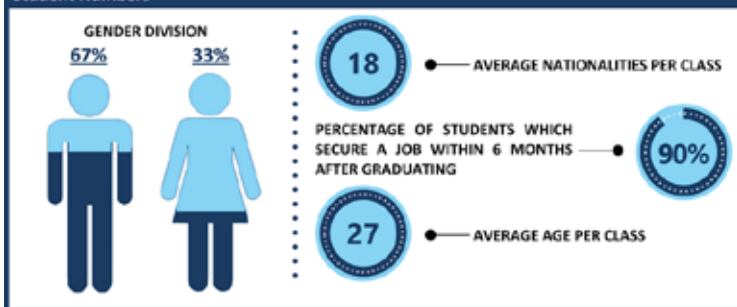




Did You Know?

About MEL

Student Numbers



Alumni Network



Company Network

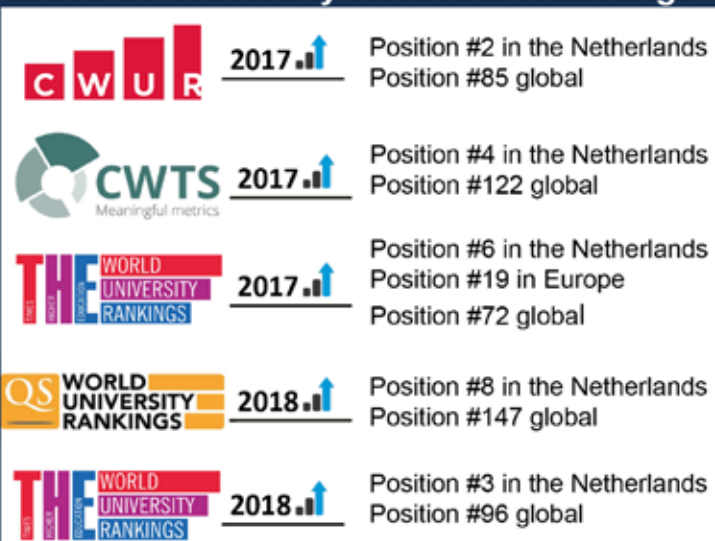


Accreditations



About Erasmus University Rotterdam

Erasmus University Rotterdam Rankings



About Erasmus University Rotterdam

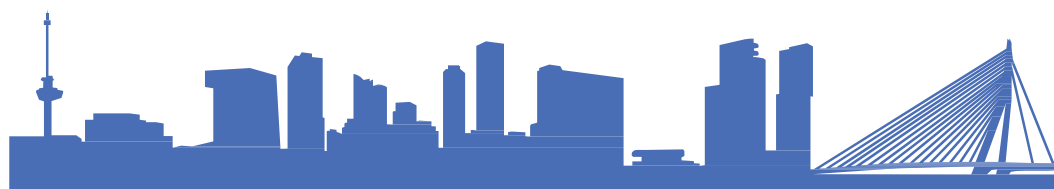
About 2,700 academics and staff involved in **teaching and research**

More than **28,000** students

Founded in **1913**

The EUR is proud of its three winners of the **Nobel Prize in Economics**:

- Jan Tinbergen (1969)
- Tjalling Koopmans (1975)
- Sir Clive Granger (2003)





Did You Know?

About Rotterdam & The Netherlands



- Rotterdam is a dynamic global city.
- Rotterdam is the second largest city in the Netherlands.
- Rotterdam has one of the few city skylines in the Netherlands.
- Rotterdam is mostly very modern and urban but it also has neighborhoods with classic Dutch architecture.
- Rotterdam is very multi-cultural and international.
- Rotterdam has lots of lively neighborhoods with great restaurants, bars, and shopping.
- Great public transport ensures everything is close by (metro, trams, bus, trains, water taxi).
- Several large (multinational) companies have offices in Rotterdam.

- Biking isn't just a mode of transport, its part of Dutch lifestyle.
- Holland's many international students come from more than 160 different countries.
- Dutch society is strongly connected to other cultures, the business community and the world.
- The Dutch are open-minded and direct, so it is easy to meet them and exchange ideas.



- Holland is one of the safest countries in the world, according to the [2016 Global Peace Index](#) and belongs to the top 10 happiest countries in the world according to the [OECD Better Life Index](#).
- An international trip is just around the corner. In just three hours you can be in Paris. London and Berlin are just a five or six hour train ride away. Holland is the gateway to Europe!
- There is plenty to see in Holland, whether you're strolling through town, making a boat trip on the canals or lakes, lazing on the beach or walking in the woods and dunes.

source: <https://www.studyinholland.nl>



Representative:

Tina Purwono/YUKIB

Jl. Klampis Aji II/17 Surabaya 60117

Tel: 031 5927320

Mobile: 0818501372 & 08563288911

Email: icesby@indo.net.id

Web: www.kuliahbelanda.com

For more information please contact
Center for Maritime Economics and Logistics
Erasmus University Rotterdam
3062 PA, Rotterdam
The Netherlands
Tel: +31(0)104081443

www.maritimeeconomics.com
info@maritimeeconomics.com

This brochure is correct at the time of going to print (May 2018). The Center for Maritime Economics and Logistics reserves the right to amend any aspects of this information. For the latest information please see our website.

Check out our new videos on our [YouTube Channel!](#)

Follow us on social media!



<https://www.facebook.com/MELMSC/>



<https://www.linkedin.com/in/mel-msc-page-33a784112/>



https://twitter.com/mel_msc

