



INTERNATIONAL EXPOSURE OPPORTUNITIES

FOR IUP STUDENTS AT ITS / 2021

Preface

by Prof. Ashari, Rector of ITS

I am delighted to introduce you to the International Exposure Opportunities Booklet for International Undergraduate Program (IUP) 2021. As a university that embarks a journey to become a world-class university, Institut Teknologi Sepuluh Nopember (ITS) is well aware of the need to prepare our students through proper scientific explorations. We also aspire to produce nation's future leaders who can later enhance lives and society for Indonesia and beyond. To prepare the graduates who are ready to play an immense role in the global market, we provide our students with limitless possibilities of international exposures through various programs. ITS has forged partnerships with top global universities & educational institutions which enable the students to treasure the opportunity to participate in the student exchange, joint degree, short program, and lab internship program abroad. By pursuing academic excellence through diversity and internationalization, the overseas program will expose the students to deep and nuanced possibilities and environments that hopefully help them in becoming professionals who can contribute globally to their fields and society as a whole.

Year 2019-2020 marked some outstanding milestones of ITS Surabaya. The university

continued to grow in scale as we launched the establishment of 20 International Undergraduate Programs for both Indonesian and non-Indonesian students. We initiated brand collaborations and partnerships to build up our international education and research. This leads to 1.075 international mobility programs that we have made possible per 2019 with 71 % of the total amount going to the outbound mobility which facilitated our students, lecturers, and staff to go abroad and join academic, professional development, or training programs.

On top of our breakthroughs, ITS cements its place on the top three universities in Indonesia based on the world university ranking from Times Higher Education (THE). ITS has been demonstrating significant trends in the QS (Quacquarelli Symonds) global university ranking by progressing to position 751-800 and 164 in the QS Asia Ranking. The continuous increase of global recognition means more doors opened for our community to explore. Written in the book is the list of our dear partners that will help you in obtaining international exposures and global competencies. I am hopeful that this book will help you to find the most-fit opportunity that can better equip you in the global world.



How to Use This Book

These colored circles represent the faculty that could participate in the program

Description about the university

Link to website for detailed information


Important notes

The name of the university

Type of the program

Details of the program

The information about the living cost is an approximate guide only and does not take into account personal budgets and spending habits.



CHONNAM NATIONAL UNIVERSITY

South Korea

Since its foundation in 1952, CNU has been the proud center for the region's globalization efforts. Now, CNU is a home to some 1,400 international students from every corner of the world, and it sends and receives more than 1,200 students every year through partnerships with some 450 universities in 57 different countries. CNU also has outstanding Korean language programs operated by its Language Education Center, teaching the Korean language to some 1,300 students annually. CNU also has several CNU Centers and CNU Korean Programs overseas in China and Vietnam. It also recently opened its first satellite office in the State of New Jersey in the U.S.

Course Offered
<http://international.cnu.ac.kr/inter/indexSub.action?code=19030&subcode=19030001&menu01Type=tab>

Program: Student Exchange

Academic Period	Minimum GPA
1st Semester/Fall : End August-December 2nd Semester/Spring : End February-June	-
Quota	Minimum TOEFL
2-4 students each semester	477 (TOEFL/IBT)
Living Cost*	Minimum IELTS
\$714-1,196 USD/Month	5.5 overall (IBT)
Deadline	
1st Semester/Fall : Mid of April 2nd Semester/Spring : Mid of October	
<small>*Living expenses reference: 1. http://international.cnu.ac.kr/inter/international/download/2020_down/2020admission_guide_en.pdf 2. http://www.cnu.ac.kr/images/ChonnamNationalUniv/ChonnamNationalUniv/INFORMATION/2020/2020LivingCost.pdf </small>	
Grading System	
Grade Point	Letter Grade
4.5	A+
4.0	A
3.5	B+
3.0	B
2.5	C+
2.0	C
1.5	D+
1.0	D
0.0	F

Table of Contents

Rector Preface	1	
How to Use This Book		2
Table of Contents	3	
What to Do		4
General Requirements	8	
Terms and Conditions		10
Glossary	11	
Funding Request Assistance		12
What They Say	14	
Who to Contact		15
Faculty and Department IUP ITS		
CIVPLAN	16	
CREABIZ		24
SCIENTICS	28	
INDSYS		34
ELECTICS	42	
MARTECH		50
International Exposure Opportunities		
ASIA	52	
EUROPE		90
NORTH AMERICA	98	
Frequently Asked Questions		100

What to Do

STUDENT

PRE

a. Attend the IEP workshop

Starting from the 1st Semester, students and parents are requested to attend the Information for Parents (IEP) Information for Parents. Throughout the workshop, they are presented with information about the IEP – its schemes, procedures, requirements, and university partners. The workshop provides international exposure opportunities that the students and the parents can discuss further with the ITS Global Engagement and IEP supervisors.

b. Attend Internationalization at Home Program

During the first – fourth semester, students are requested to attend FS2 (From Student For Student), GCW (Global Competences Workshop), GLS (Guest Lecture Series), GLP (Global Learning Program), Student Session and Let's Study Abroad session. Throughout these workshops, they are exposed to detailed information about IEP, which covers the tips and tricks, experiences during IEP, and much other beneficial information. The workshops provide students with various information from experts and senior students who have experienced the IEP.

c. Obtain a language proficiency certificate

To be eligible for IEP, students need to have a valid IELTS or TOEFL IBT or TOEFL ITP or TEFL/EFL ITS certificate. It is their responsibility to obtain the certificate before the deadline of application. Students also need to note that each university has different requirements in terms of the minimum score or the type of language proficiency certificate.

d. Submit the required documents

At the end of the third semester, students are requested to prepare all requirements required by the host university and can send the submission in the early of the fourth semester for the program that will start in the fifth semester.

e. Participate in the internal selection process

For all students who apply to the ITS Global Engagement selection process, students who completed all of the requirements will be invited to attend the interview/selection process, which consists of ITS Global Engagement management. Upon assessing each student's documents and interview results, the committee finalizes the placement process. The results are sent to students and partner universities.

STUDENT

DURING

a. Apply to the host university

It is the students' responsibility to complete their application at partner universities. Please note that procedures and deadlines differ from one university to another. Students should consult with the ITS Global Engagement on the application process and with their assigned department supervisor on the course selection. Students are responsible to always have communication with the department if there is any course change.

b. Make transportation and accommodation arrangements

It is advisable that students finalize their transportation and accommodation arrangements right after their visa is issued. The IEP coordinator will put the students in touch with staff members at the host university's International Office and/or student buddy

c. Apply for visa

Upon getting a letter of acceptance (LoA) from the host university, students may start applying for their visa. Students need to comply with all visa regulations. It is the students' responsibility to make sure they get the right type of visa promptly.

POST

a. Credits Transfer

Upon finishing the IEP, students submit a copy of the official certificate/transcripts to the respected department along with a signed Learning Agreement.

What to Do

PARENTS

PRE

a. Attend the IEP workshop

At the beginning of the 1st semester, parents are requested to attend the IEP workshop, which is Information for Parents. Throughout the workshop, they are exposed to information about the IEP – its schemes, procedures, requirements, and university partners. The workshop provides international exposure opportunities that the students and the parents can discuss further with the ITS Global Engagement and IEP supervisors.

b. Providing guidance

Parents must provide guidance for the students in choosing the most-fit IEP that also suits their financial competence.

DURING

a. Providing support

It is hoped that parents can give continuous moral and financial support to students during the IEP.

POST

- a.** Parents are required to remind the students to finish the credit transfer process upon arrival from the IEP.

DEPARTMENT

PRE

a. Guidance

Supervisors provide guidance to discuss the compatibility of the desired IEP and the students' subjects or majors.

b. Providing required documents

Each department helps to provide a recommendation letter needed by the students.

c. Signing the Learning Agreement (LA)

Departments processed the Learning Agreement proposed by the students for the credit transfer process. The departments are also responsible for the approval and the equivalency process between the students' courses and the IEP.

DURING

a. Assisting the students in the arrangement process of SPP Rp o

POST

a. Validating the Learning Agreement

Departments must check and validate the LA, certificate, or official academic transcript obtained by the students after the IEP.

General Requirements

1. Official Academic Transcript in English Version (Transkrip Akademik dalam Bahasa Inggris)

Please download your Academic Transcript from your integra. Click on "transkrip sementara" and download it. (The document already consists of e-signature and official stamp).

2. Certificate of Enrollment (Surat Keterangan Mahasiswa Aktif ITS dalam bahasa Inggris)

This document aims to prove that you are currently an active student at ITS. You can get this letter from your integra. Select "Surat Mahasiswa" and then choose "Surat Keterangan Mahasiswa Aktif". To apply for a study abroad program, you may choose "lain-lain/etc" in the "keperluan" column. Please complete the necessary column with the name of the program that you are applying to. (Due to study from home regulation, the letter is already signed with QR code, so you do NOT have to go to BAAK to get a signature).

3. Certificate of English Proficiency (Sertifikasi Kemampuan Bahasa Inggris)

You can use TOEFL/IELTS depending on the requirements of the program. For exchange programs under ITS' partnership with Erasmus, you should submit at least TOEFL ITP. For a regular exchange program, you may use EFL (from CLC ITS/UPT Bahasa dan Budaya ITS). Please make sure that your TOEFL/IELTS/EFL is still valid (TOEFL test will only be valid for two years after the test date).

4. Passport (Paspor)

Please make sure that you submit your passport to join a study abroad program. Please make sure that your passport is still valid for at least 1 more year. ITS Global Engagement office will not process your documents if you do not submit your passport. It is advisable to prepare these documents early.

5. Statement Letter (Surat Pernyataan)

This letter is to confirm that you have already understood the terms and conditions of the program and will comply with the rules. Please download the file in this link: <https://intip.in/PernyataanShortStudentExchangeProgram> [Surat Pernyataan Short or Student Exchange Program]

In several programs, students also need to provide a statement letter from their parents/guardians. The letter consists of a pledge from the parents/guardians that they financially support the students to join the program.

6. Recommendation Letter in English Version (Surat Rekomendasi dalam Bahasa Inggris)*

Mostly, there is no specific format for the recommendation letter. However, please note if there is a specific format for the recommendation letter required by the university that you are applying. It will be better if you can get a recommendation from someone of high position.

7. Special Requirement

Student Exchange: Learning Agreement

You must use this form to confirm the courses that you will take for the student exchange program. Please download the form at the following link: <https://intip.in/learningagreement> [file learning agreement]

To fill the form, please check the information below:

1. Home university means ITS. Host University means the proposed university.
2. Please fill in the courses that you would like to take at the host university (that you would like to transfer and other additional courses such as language, presentation, or other general courses).
3. Please fill the courses that can be transferred to the Home University. **Please make sure that you have already discussed it with your Head of Department & LO International at your department regarding the course that can be transferred to your department.** Please note that the students need to take & transfer a minimum 10-12 SKS.
4. For the signature at the 'Home University' section, please fill in the name of your Head of Department at the 'Dept. Coordinator' section and please fill the name of Senior Manager of ITS Global Engagement on Promotion & Mobility (Octaviyanti Dwi Wahyurini, S.T., M.AppDesArt, Ph.D.) at the 'Institutional Coordinator' section.
5. Please leave the Institutional Coordinator field blank when you submit your application to ITS GE. Dr. Octaviyanti will sign your learning agreement after finishing all the internal selection process.

Internship/Final Project: Work Plan/Study Plan

You should submit the work plan in 500 – 1000 words (depending on the requirement of the program you have chosen). Please mention what you want to do during your internship.

Short Program/Winter or Summer Program: Motivation Letter

You should submit your motivation letter in 500 – 1000 words (depending on the requirement of the program you have chosen). Please elaborate on the reason why you apply for the program and what impact you would make if you were accepted as one of the participants.

Terms and Conditions

1

All IUP students have the same rights to information and guidance regarding the IEP.

2

ITS cannot guarantee that students are approved in the IEP. There is a possibility of program cancellation from the university partners.

3

Students are fully responsible for the visa processing, registration at the partner universities, and email/mobile communication with partner universities.

4

The slow response of the students in the preparation process prior to the departure may lead to cancellations from the partner. This condition is beyond ITS responsibility.

5

Students who are found to have falsified documents will be disqualified / their nominations were withdrawn.

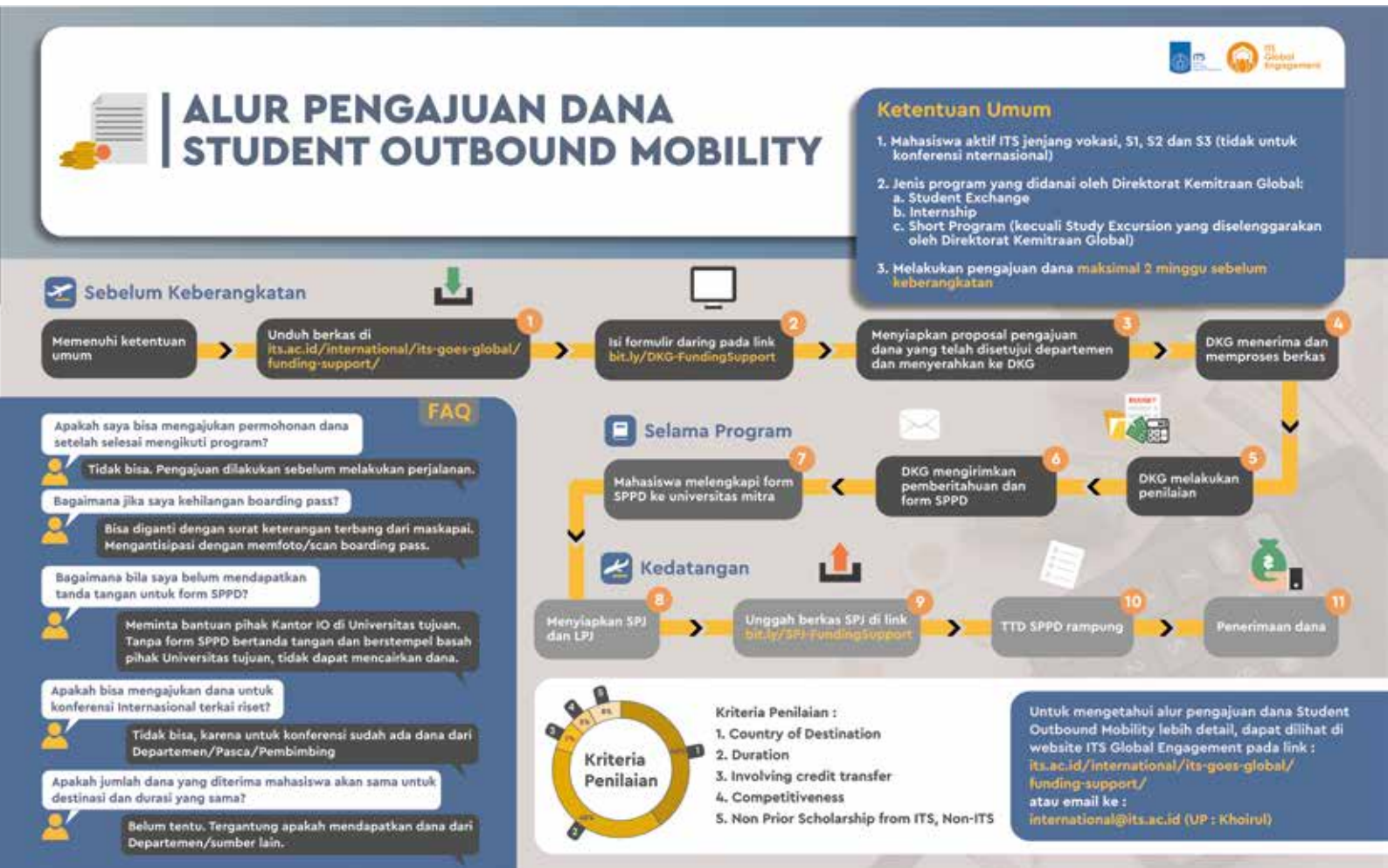
6

All IUP students have to actively seek any information about the IEP opportunity which is provided in ITS GE social media/website. ITS GE is not responsible for the IUP students who have not gotten any IEP until the end of their study at ITS.

Glossary

ITS GE	: ITS Global Engagement
CLC	: Center of Language & Culture (Unit Pelayanan Terpadu Bahasa dan Budaya)
TOEFL	: Test of English as a Foreign Language
IELTS	: International English Language Testing System
EFL test	: English as Foreign Language test
GPA	: Grade Point Average (Indeks Prestasi Kumulatif)
IEP	: International Exposure Program
LoA	: Letter of Agreement
LO	: Liaison Officer
SPJ	: Financial report
CV	: Curriculum Vitae
FS2	: From Student For Student
GCW	: Global Competences Workshop
GLS	: Guest Lecture Series
GLP	: Global Learning Program
CIVPLAN	: Faculty of Civil, Planning, and Geo Engineering
SCIENTICS	: Faculty of Science and Data Analytics
INDYSIS	: Faculty of Industrial Technology and Systems Engineering
ELECTICS	: Faculty of Intelligent Electrical and Informatics Technology
MARTECH	: Faculty of Marine Technology
Home university	: Home university means ITS
Host university	: Host university means the proposed university

Funding Request Assistance



ITS Global Engagement provides fund support for ITS active students to participate in international mobility. **Please kindly note that this fund is not applicable for Online Mobility Program.**

GENERAL REQUIREMENTS

1. Active Bachelor and Master's students
2. Applying for:
 1. Student Exchange
 2. Internship
 3. Short Program (If you apply for ITS GE Study Excursion, you cannot apply for this fund)

PROCEDURES

1. Submit the documents one month to two weeks prior to the program. Failing to submit by the given time, the proposal will not be further processed.
2. Fill the online submission form at bit.ly/DKG-FundingSupport
3. Submit FUND SUBMISSION PROPOSAL signed by the Head of Department with the attachment as follows:
 1. LoA
 2. CV
 3. Proposal legalization from department
4. Collect financial report file (SPJ) and TRAVEL REPORT maximum three days after arrival.
5. Upload the financial report file to bit.ly/SPJ-FundingSupport

FUNDING ESTIMATION

Students can check about the funding estimation that they can get from this scheme:

STANDAR BIAYA BANTUAN MOBILITAS

NO	NAMA KEGIATAN	LAMA KEGIATAN				
		> 6 BULAN	4-6 BULAN	2-3 BULAN	16-30 HARI	≤ 15 HARI
1.	ASEAN atau Asia Non ASEAN	3.000.000	2.400.000	2.200.000	1.750.000	1.500.000
2.	Jepang	4.300.000	3.600.000	3.300.000	2.800.000	2.500.000
3.	Afrika	6.700.000	5.700.000	5.300.000	4.600.000	4.200.000
4.	USA/Eropa	8.300.000	7.200.000	6.700.000	5.900.000	5.000.000

Inquiries

For any inquiries, kindly send an e-mail to:

Ms. Neni : international@its.ac.id

Subject: Student Funding Support_Name



Being an Erasmus student in the UK is one of the most challenging but remarkable stage in my life. This program has greatly improved myself in communication skills and problem-solving skills. Exploring new places and joining international communities while living in UK have broadened my perspectives. Not only I got the chance to learn different cultures, but I also was able to introduce Indonesia to my friends that come from around the world. It was such an amazing experience.

Gabriella Icasia

Information System (2017) - Erasmus+ Student Mobility at Cardiff Metropolitan University, UK Fall Semester 2019 Intake

Getting the opportunity to become an exchange student at one of the best universities in South Korea is something that will never be forgotten. I am one of 400 international students who completed our study in the spring semester 2019 at the Chung Ang University campus in Seoul, South Korea. There, I got the opportunity to study with very very complete facilities, friendly buddies, and various cultural exchange programs provided by the university. If you got the chance to study there, make sure you don't miss even one opportunity and explore as much as possible!

Learning with students here makes me realize how active and diligent the Korean students in learning. It gives new enthusiasm to me and encourage me to more exploring new things in the learning process. And can't be missed, the professor at CAU is very kind and so much helping students in learning.

Besides that, getting the opportunity to become a student who gets a scholarship from GKS for one semester is an honor for me. The scholarship I got from NIIED helped me a lot in undergoing this exchange program.

Until now, there are so many moments that I am grateful to have got it. Therefore, prepare yourself. Lots of opportunities waiting for you out there and make sure you don't miss it!

Ghina Alifia Nabilah

Architecture (2016) - Student Exchange at Chung-Ang University (CAU) South Korea Spring Semester 2019 Intake



What They Say

I never thought that I would go overseas during my college year. I didn't know much about ITS International Office nor its programs. My only interest was only to be an active student by joining many student communities, event organizing committees, and even student executive board of ITS. I also thought that going overseas is very expensive and complicated. I must complete my visa, adapt to a new culture, and be independent by living on myself.

After 2 years of joining many organizations and committees, I got bored. I also don't have any international experience, so I tried to find an opportunity that fits me. Then, ITS IO opened an opportunity to be an exchange student for 1 semester at Universiti Teknologi Malaysia. I tried to find the courses that could be transferred and luckily, I found several linear subjects. So, I consulted it with my department and applied for the program. I never thought that I could be accepted in this program because of my lack of experience in International exposure. But somehow, God guided me to embrace this path.

Then, after I arrived in Malaysia and began to study, trust me that every negative thought I have about student exchange is wrong. It was very worth it. I somehow learned how to cooperate with people with different languages and cultures. I also found different learning materials and techniques that enhanced my skill for academic purposes.

I wish I knew international programs earlier. Now my only thought is 'the world is moving fast, why was I still sitting in the same class?'. Don't miss any chance, find a program that ITS IO offered. It is worth to try.

Tio Noval Rizky

Geomatics Engineering (2016) - Student Exchange at Universiti Teknologi Malaysia (UTM) Fall Semester 2019 intake



IEP Coordinator

Mr. Muh. Wahyu Islami Pratama
ITS Global Engagement
Kantor Direktorat Kemitraan Global
Gedung Rektorat ITS, Lt. 1
ITS Kampus Sukolilo
Surabaya – 60111
Email: studyabroad@its.ac.id
031-5923411

Who to Contact

An aerial photograph of a detailed model city. The city is built on a dark, textured base. A central feature is a large, circular park area with a green lawn and a small, circular building in the middle. Surrounding the park are several large, white, rectangular buildings with flat roofs. Some of these buildings have small, circular windows. The city is also surrounded by a network of roads, some of which are marked with white dashed lines. There are several small, white cars on the roads. The city is bordered by a series of small, brown, textured hills or mountains. The overall scene is a realistic representation of a city layout.

FACULTY OF CIVIL, PLANNING, AND GEOENGINEERING (CIVPLAN)

DEPARTMENT OF ARCHITECTURE

	ASIA
	JAPAN
57	Shibaura Institute of Technology (SIT)
	MALAYSIA
60	University of Malaya
61	Universiti Teknologi Malaysia
	PHILIPPINES
62	Mapua University
63	The University of Philippines Diliman (UP Diliman)
	SOUTH KOREA
65	Chung Ang University (CAU)
	THAILAND
81	King Mongkut's Institute of Technology Ladkrabang (KMITL)
83	King Mongkut's University of Technology Thonburi (KMUTT)
	EUROPE
	TURKEY
85	Eskisehir Technical University (ETU)
	THE NETHERLANDS
97	Hanze University of Applied Sciences Groningen (School of Architecture & Built Environment)

DEPARTMENT OF CIVIL ENGINEERING

ASIA

MALAYSIA

Universiti Malaysia Pahang (UMP)

58

University of Malaya

60

Universiti Teknologi Malaysia

61

PHILIPPINES

Mapua University

62

The University of Philippines Diliman (UP Diliman)

63

SOUTH KOREA

Chung Ang University (CAU)

65

Kumoh National Institute of Technology (KIT)

67

TAIWAN

National Taiwan University of Science & Technology (NTUST / Taiwan TECH)

74

THAILAND

King Mongkut's Institute of Technology

81

Ladkrabang (KMUTL)

King Mongkut's University of Technology

83

Thonburi (KMUTT)

The Sirindhorn International Institute of Technology (SIIT) Thammasat University

84

TURKEY

Suleyman Demirel University (SDU)

86

EUROPE

DENMARK

University of Southern Denmark (SDU)

90

THE NETHERLANDS

Hanze University of Applied Sciences Groningen
(School of Architecture & Built Environment)

97

NORTH AMERICA

CANADA

Okanagan College

99

DEPARTMENT OF ENVIRONMENTAL ENGINEERING

	ASIA
	JAPAN
56	Kumamoto University
	MALAYSIA
58	Universiti Malaysia Perlis (UniMAP)
59	Universiti Malaysia Pahang (UMP)
60	University of Malaya
61	Universiti Teknologi Malaysia
	PHILIPPINES
62	Mapua University
	SOUTH KOREA
64	Chonnam National University
65	Chung Ang University (CAU)
68	Pohang University of Science & Technology (POSTECH)
	TAIWAN
75	National Tsing-Hua University (NTHU)
	THAILAND
83	King Mongkut's University of Technology Thonburi (KMUTT)
	EUROPE
	THE NETHERLANDS
97	Hanze University of Applied Sciences Groningen (School of Architecture & Built Environment)

DEPARTMENT OF GEOMATICS ENGINEERING

ASIA

BRUNEI DARUSSALAM

University Brunei Darussalam (UBD)

52

MALAYSIA

Universiti Malaysia Pahang (UMP)

58

University of Malaya

60

Universiti Teknologi Malaysia

61

PHILIPPINES

Mapua University

62

The University of Philippines Diliman (UP Diliman)

63

THAILAND

King Mongkut's University of Technology

83

Thonburi (KMUTT)

TURKEY

Suleyman Demirel University (SDU)

86

Isparta University of Applied Sciences (IUAS)

87

NORTH AMERICA

CANADA

Okanagan College

99

DEPARTMENT OF GEOPHYSICS ENGINEERING

62

63

86

99

ASIA

PHILIPPINES

Mapua University

The University of Philippines Diliman (UP Diliman)

TURKEY

Suleyman Demirel University (SDU)

NORTH AMERICA

CANADA

Okanagan College

DEPARTMENT OF URBAN AND REGIONAL PLANNING

ASIA

BRUNEI DARUSSALAM

University Brunei Darussalam (UBD)

52

JAPAN

Shibaura Institute of Technology (SIT)

57

PHILIPPINES

The University of Philippines Diliman (UP Diliman)

63

TURKEY

Suleyman Demirel University (SDU)

86

Isparta University of Applied Sciences (IUAS)

87

EUROPE

THE NETHERLANDS

Amsterdam University of Applied Sciences (AUAS)

96

- Faculty of Technology

Hanze University of Applied Sciences Groningen
(School of Architecture & Built Environment)

97



The background of the image is a grayscale photograph of a hand-drawn sketch on paper. The sketch depicts various mechanical components, including cylindrical parts with internal structures and a larger assembly with multiple circular elements. A hand is visible on the right side, holding a pen and pointing towards the sketch. The text is overlaid on the left side of the image.

FACULTY OF **CREATIVE DESIGN AND BUSINESS MANAGEMENT (CREABIZ)**

DEPARTMENT OF BUSINESS MANAGEMENT

	ASIA
	BRUNEI DARUSSALAM
52	University Brunei Darussalam (UBD)
	MALAYSIA
58	Universiti Malaysia Pahang (UMP)
60	University of Malaya
61	Universiti Teknologi Malaysia
	SOUTH KOREA
64	Chonnam National University
65	Chung Ang University (CAU)
66	Dankook University (Jukjeon Campus Only)
67	Kumoh National Institute of Technology (KIT)
68	Pohang University of Science and Technology (POSTECH)
	TAIWAN
69	Asia University
70	Feng Chia University (FCU)
71	National Central University (NCU)
72	National Chung Hsing University (NCHU)
73	National Sun Yat-sen University (NSYSU)
74	National Taiwan University of Science & Technology (NTUST / Taiwan TECH)
75	National Tsing-Hua University (NTHU)
76	National Yunlin University of Science and Technology (YunTech)
77	Providence University
78	Tamkang University
79	Yuan Ze University
	THAILAND
82	King Mongkut's University of Technology North Bangkok (KMUTNB) – International College
84	The Sirindhorn International Institute of Technology (SIIT) Thammasat University

DEPARTMENT OF BUSINESS MANAGEMENT

EUROPE

FRANCE

University of Technology of Troyes (UTT)

93

GERMANY

Hochschule Darmstadt University of Applied Sciences

94

THE NETHERLAND

Amsterdam University of Applied Sciences (AUAS)
- Faculty of Technology

96

NORTH AMERICA

CANADA

Memorial University of Newfoundland (MUN)
Okanagan College

98

99



A scientist wearing a beige lab coat, a hijab, and safety glasses is performing a procedure. They are wearing white gloves and using a scalpel to work on a specimen inside a metal tray. The tray has a pair of scissors and a small yellow label with the word "Carlson" on it. The background is a laboratory setting with a window and some equipment.

FACULTY OF **SCIENCE AND DATA ANALYTICS (SCIENTICS)**

DEPARTMENT OF CHEMISTRY

	ASIA
	BRUNEI DARUSSALAM
52	University Brunei Darussalam (UBD)
	MALAYSIA
58	Universiti Malaysia Pahang (UMP)
59	Universiti Malaysia Perlis (UniMAP)
60	University of Malaya
61	Universiti Teknologi Malaysia
	PHILIPPINES
62	Mapua University
63	The University of Philippines Diliman (UP Diliman)
	SOUTH KOREA
64	Chonnam National University
65	Chung Ang University (CAU)
68	Pohang University of Science and Technology (POSTECH)
	TAIWAN
70	Feng Chia University (FCU)
71	National Central University (NCU)
72	National Chung Hsing University (YunTech)
73	National Sun Yat-sen University (NSYSU)
75	National Tsing-Hua University (NTHU)
	TURKEY
85	Eskisehir Technical University (ETU)
	EUROPE
	FRANCE
92	The Institut Sup'Biotech de Paris (Sup'Biotech or école d'ingénieurs en biotechnologie à Paris)
	NORTH AMERICA
	CANADA
99	Okanagan College

DEPARTMENT OF MATHEMATICS

ASIA

BRUNEI DARUSSALAM

University Brunei Darussalam (UBD) **52**

JAPAN

Kumamoto University **56**

Shibaura Institute of Technology (SIT) **57**

MALAYSIA

Universiti Malaysia Pahang (UMP) **58**

Universiti Malaysia Perlis (UniMAP) **59**

University of Malaya **60**

Universiti Teknologi Malaysia **61**

PHILIPPINES

The University of Philippines Diliman (UP Diliman) **63**

SOUTH KOREA

Chonnam National University **64**

Chung Ang University (CAU) **65**

Pohang University of Science and Technology (POSTECH) **68**

TAIWAN

Feng Chia University (FCU) **70**

National Central University (NCU) **71**

National Sun Yat-sen University (NSYSU) **73**

National Tsing-Hua University (NTHU) **75**

Providence University **77**

Tamkang University **78**

TURKEY

Eskisehir Technical University (ETU) **85**

Suleyman Demirel University (SDU) **86**

NORTH AMERICA

CANADA

Memorial University of Newfoundland (MUN) **99**

DEPARTMENT OF PHYSICS

	ASIA
	BRUNEI DARUSSALAM
52	University Brunei Darussalam (UBD)
	MALAYSIA
60	University of Malaya
61	Universiti Teknologi Malaysia
	PHILIPPINES
63	The University of Philippines Diliman (UP Diliman)
	SOUTH KOREA
65	Chung Ang University (CAU)
68	Pohang University of Science and Technology (POSTECH)
	TAIWAN
73	National Sun Yat-sen University (NSYSU)
	THAILAND
80	Chulalongkorn University – International School of Engineering
	EUROPE
	FRANCE
93	University of Technology of Troyes (UTT)
	RUSSIA
95	Saint Petersburg Electrotechnical University "LETI"
	NORTH AMERICA
	CANADA
99	Okanagan College

DEPARTMENT OF STATISTICS

ASIA

BRUNEI DARUSSALAM

University Brunei Darussalam (UBD) 52

CHINA

Tianjin University of Technology (TUT) 53

JAPAN

Kumamoto University 56

MALAYSIA

Universiti Malaysia Pahang (UMP) 58

University of Malaya 60

Universiti Teknologi Malaysia 61

PHILIPPINES

The University of Philippines Diliman (UP Diliman) 63

SOUTH KOREA

Chonnam National University 64

Chung Ang University (CAU) 65

TAIWAN

Asia University 69

Feng Chia University (FCU) 70

National Yunlin University of Science and Technology (YunTech) 74

National Tsing-Hua University (NTHU) 75

Providence University 77

Tamkang University 78

TURKEY

Eskisehir Technical University (ETU) 85

Suleyman Demirel University (SDU) 86

EUROPE

FRANCE

University of Technology of Troyes (UTT) 93

NORTH AMERICA

CANADA

Memorial University of Newfoundland (MUN) 98



FACULTY OF **INDUSTRIAL TECHNOLOGY AND SYSTEMS ENGINEERING (INDSYS)**



ASIA

CHINA

- 54 Tianjin University – School of Marine Sciences & Technology

JAPAN

- 57 Kumamoto University
Shibaura Institute of Technology (SIT)

MALAYSIA

- 58 Universiti Malaysia Pahang (UMP)
59 Universiti Malaysia Perlis (UniMAP)
60 University of Malaya
61 Universiti Teknologi Malaysia

PHILIPPINES

- 62 Mapua University
63 The University of Philippines Diliman (UP Diliman)

SOUTH KOREA

- 67 Kumoh National Institute of Technology (KIT)
65 Chung Ang University (CAU)
68 Pohang University of Science and Technology (POSTECH)

THAILAND

- 81 King Mongkut's Institute of Technology
Ladkrabang (KMITL)
83 King Mongkut's University of Technology
Thonburi (KMUTT)
84 The Sirindhorn International Institute of
Technology (SIIT) Thammasat University

TAIWAN

- 79 Yuan Ze University
75 National Tsing-Hua University (NTHU)
74 National Taiwan University of Science &
Technology (NTUST / Taiwan TECH)

TURKEY

- 89 Istanbul Technical University (ITU)

EUROPE

FRANCE

- 92 The Institut Sup'Biotech de Paris (Sup'Biotech or
école d'ingénieurs en biotechnologie à Paris)

DEPARTMENT OF ENGINEERING PHYSICS

ASIA

JAPAN

Kumamoto University	57
Shibaura Institute of Technology (SIT)	

MALAYSIA

Universiti Malaysia Perlis (UniMAP)	59
University of Malaya	60
Universiti Teknologi Malaysia	61

PHILIPPINES

Mapua University	62
The University of Philippines Diliman (UP Diliman)	63

SOUTH KOREA

Chonnam National University	64
Kumoh National Institute of Technology (KIT)	67
Chung Ang University (CAU)	65
Pohang University of Science and Technology (POSTECH)	68

TAIWAN

National Chung Hsing University (NCHU)	72
Yuan Ze University	79
National Sun Yat-sen University (NSYSU)	73
Providence University	77
Feng Chia University (FCU)	70
Asia University	69
National Central University (NCU)	71

TURKEY

Istanbul Aydin University (IAU)	88
---------------------------------	----

THAILAND

Chulalongkorn University – International School of Engineering	80
King Mongkut's Institute of Technology Ladkrabang (KMITL)	81

DEPARTMENT OF ENGINEERING PHYSICS

EUROPE

FRANCE

93 University of Technology of Troyes (UTT)

RUSSIA

95 Saint Petersburg Electrotechnical University
"LETI"

NORTH AMERICA

CANADA

98 Memorial University of Newfoundland (MUN)

DEPARTMENT OF INDUSTRIAL AND SYSTEMS ENGINEERING

ASIA

BRUNEI DARUSSALAM

University Brunei Darussalam (UBD) 52

CHINA

Tianjin University of Technology (TUT) 53

MALAYSIA

University of Malaya 60

Universiti Teknologi Malaysia 61

Universiti Malaysia Perlis (UniMAP) 59

PHILIPPINES

Mapua University 62

The University of Philippines Diliman (UP Diliman) 63

SOUTH KOREA

Chonnam National University 64

Chung Ang University (CAU) 65

Dankook University (Jukjeon Campus Only) 66

Kumoh National Institute of Technology (KIT) 67

Pohang University of Science & Technology (POSTECH) 68

TAIWAN

Asia University 69

Feng Chia University (FCU) 70

National Sun Yat-sen University (NSYSU) 73

National Chung Hsing University (NCHU) 72

Yuan Ze University 79

Tamkang University 78

Providence University 77

THAILAND

King Mongkut's University of Technology 82

North Bangkok (KMUTNB) – International College

King Mongkut's University of Technology 83

Thonburi (KMUTT)

King Mongkut's Institute of Technology 81

Ladkrabang (KMITL)

The Sirindhorn International Institute of 83

Technology (SIIT) Thammasat University

Chulalongkorn University – International School of Engineering 80

TURKEY

- 85** Eskişehir Technical University (ETU)
- 88** Istanbul Aydın University (IAU)

EUROPE

DENMARK

- 86** University of Southern Denmark (SDU)

FRANCE

- 91** The Institut Supérieur d'Electronique de Paris (ISEP)
- 93** University of Technology of Troyes (UTT)

RUSSIA

- 95** Saint Petersburg Electrotechnical University "LETI"

THE NETHERLAND

- 96** Amsterdam University of Applied Sciences (AUAS)
- Faculty of Technology

NORTH AMERICA

CANADA

- 98** Memorial University of Newfoundland (MUN)
- 99** Okanagan College

ASIA

MALAYSIA

Universiti Malaysia Perlis (UniMAP)	59
University of Malaya	60
Universiti Teknologi Malaysia	61

JAPAN

Shibaura Institute of Technology (SIT)	57
--	----

PHILLIPINES

The University of Philippines Diliman (UP Diliman)	63
--	----

SOUTH KOREA

Chonnam National University	67
Kumoh National Institute of Technology (KIT)	

TAIWAN

National Taiwan University of Science & Technology (NTUST / Taiwan TECH) Yuan Ze University	79
---	----

THAILAND

Chulalongkorn University – International School of Engineering	80
--	----

EUROPE

FRANCE

University of Technology of Troyes (UTT)	93
--	----

DEPARTMENT OF MECHANICAL ENGINEERING

	ASIA
	JAPAN
57	Shibaura Institute of Technology (SIT)
	PHILIPPINES
63	The University of Philippines Diliman (UP Diliman)
	MALAYSIA
58	Universiti Malaysia Pahang (UMP)
60	University of Malaya
61	Universiti Teknologi Malaysia
	SOUTH KOREA
63	Chonnam National University
65	Chung Ang University (CAU)
67	Kumoh National Institute of Technology (KIT)
68	Pohang University of Science & Technology (POSTECH)
	TAIWAN
70	Feng Chia University (FCU)
79	Yuan Ze University
	THAILAND
80	Chulalongkorn University – International School of Engineering
81	King Mongkut's Institute of Technology Ladkrabang (KMUTL)
83	King Mongkut's University of Technology Thonburi (KMUTT)
84	The Sirindhorn International Institute of Technology (SIIT) Thammasat University
	TURKEY
85	Eskisehir Technical University (ETU)
	EUROPE
	DENMARK
86	University of Southern Denmark (SDU)
	THE NETHERLAND
96	Amsterdam University of Applied Sciences (AUAS)
	RUSSIA
95	Saint Petersburg Electrotechnical University "LETI"
	NORTH AMERICA
	CANADA
99	Okanagan College

A photograph of two male students in a laboratory setting. They are focused on a complex electrical control panel filled with numerous black wires. One student, wearing a white polo shirt, is reaching into the panel. The other student, wearing a black polo shirt with 'ABFI Yulis' printed on it, is holding a white sheet of paper, likely a wiring diagram. In the foreground, there is a large, grey industrial motor. The background shows shelves with various electronic components and equipment.

FACULTY OF INTELLIGENT ELECTRICAL AND INFORMATICS TECHNOLOGY (ELECTICS)

DEPARTMENT OF ELECTRICAL ENGINEERING

ASIA

CHINA

- 43** Tianjin University – School of Marine Sciences & Technology

JAPAN

- 47** Shibaura Institute of Technology (SIT)

MALAYSIA

- 48** Universiti Malaysia Pahang (UMP)
49 Universiti Malaysia Perlis (UniMAP)
50 University of Malaya
51 Universiti Teknologi Malaysia

PHILIPPINES

- 52** Mapua University
53 The University of Philippines Diliman (UP Diliman)

SOUTH KOREA

- 55** Chung Ang University (CAU)
57 Kumoh National Institute of Technology (KIT)
58 Pohang University of Science & Technology (POSTECH)

TAIWAN

- 59** Asia University
60 Feng Chia University (FCU)
64 National Taiwan University of Science & Technology (NTUST / Taiwan TECH)
69 Yuan Ze University

THAILAND

- 70** Chulalongkorn University – International School of Engineering
71 King Mongkut's Institute of Technology Ladkrabang (KMUTL)
73 King Mongkut's University of Technology Thonburi (KMUTT)
74 The Sirindhorn International Institute of Technology (SIIT) Thammasat University

TURKEY

- 79** Istanbul Technical University (ITU)

DEPARTMENT OF ELECTRICAL ENGINEERING

EUROPE

DENMARK

University of Southern Denmark (SDU) – Faculty Engineering

90

FRANCE

The Institut Supérieur d'Electronique de Paris (ISEP)

91

GERMANY

Hochschule Darmstadt University of Applied Sciences

94

RUSSIA

Saint Petersburg Electrotechnical University "LETI"

95

NORTH AMERICA

CANADA

Memorial University of Newfoundland (MUN)
Okanagan College

98

DEPARTMENT OF INFORMATICS ENGINEERING

ASIA

BRUNEI DARUSSALAM

52 University Brunei Darussalam (UBD)

CHINA

53 Tianjin University of Technology (TUT)

JAPAN

56 Kumamoto University

57 Shibaura Institute of Technology (SIT)

MALAYSIA

58 Universiti Malaysia Pahang (UMP)

59 Universiti Malaysia Perlis (UniMAP)

60 University of Malaya

61 Universiti Teknologi Malaysia

PHILIPPINES

62 Mapua University

63 The University of Philippines Diliman (UP Diliman)

SOUTH KOREA

64 Chonnam National University

66 Dankook University (Jukjeon Campus Only)

68 Pohang University of Science & Technology (POSTECH)

TAIWAN

69 Asia University

73 National Sun Yat-sen University (NSYSU)

75 National Tsing-Hua University (NTHU)

77 Providence University

79 Yuan Ze University

THAILAND

80 Chulalongkorn University – International School of Engineering

81 King Mongkut's Institute of Technology Ladkrabang (KMITL)

83 King Mongkut's University of Technology Thonburi (KMUTT)

84 The Sirindhorn International Institute of Technology (SIIT) Thammasat University

DEPARTMENT OF INFORMATICS ENGINEERING

TURKEY

Eskisehir Technical University (ETU)

85

Istanbul Aydin University (IAU)

88

Suleyman Demirel University (SDU)

86

EUROPE

DENMARK

University of Southern Denmark (SDU)

90

FRANCE

The Institut Supérieur d'Electronique de Paris (ISEP)

91

GERMANY

Hochschule Darmstadt University of Applied Sciences

94

RUSSIA

Saint Petersburg Electrotechnical University "LETI"

95

NORTH AMERICA

CANADA

Memorial University of Newfoundland (MUN)

98

Okanagan College

DEPARTMENT OF INFORMATION SYSTEMS

ASIA

BRUNEI DARUSSALAM

52 University Brunei Darussalam (UBD)

CHINA

53 Tianjin University of Technology (TUT)

JAPAN

56 Kumamoto University

57 Shibaura Institute of Technology (SIT)

MALAYSIA

58 Universiti Malaysia Pahang (UMP)

59 Universiti Malaysia Perlis (UniMAP)

60 University of Malaya

61 Universiti Teknologi Malaysia

PHILIPPINES

62 Mapua University

63 The University of Philippines Diliman (UP Diliman)

SOUTH KOREA

64 Chonnam National University

65 Chung Ang University (CAU)

66 Dankook University (Jukjeon Campus Only)

67 Kumoh National Institute of Technology (KIT)

68 Pohang University of Science and Technology (POSTECH)

TAIWAN

69 Asia University

73 National Sun Yat-sen University (NSYSU)

75 National Tsing-Hua University (NTHU)

77 Providence University

78 Tamkang University

THAILAND

80 Chulalongkorn University – International School of Engineering

81 King Mongkut's Institute of Technology
Ladkrabang (KMIL)

83 King Mongkut's University of Technology
Thonburi (KMUTT)

TURKEY

88 Istanbul Aydin University (IAU)

86 Suleyman Demirel University (SDU)

DEPARTMENT OF INFORMATION SYSTEMS

EUROPE

DENMARK

University of Southern Denmark (SDU)

90

FRANCE

The Institut Supérieur d'Electronique de Paris (ISEP)

91

GERMANY

Hochschule Darmstadt University of Applied Sciences

94

THE NETHERLAND

Amsterdam University of Applied Sciences (AUAS)

96

NORTH AMERICA

CANADA

Memorial University of Newfoundland (MUN)

98



FACULTY OF MARINE TECHNOLOGY (MARTECH)



DEPARTMENT OF NAVAL ARCHITECTURE

	ASIA
	CHINA
54	Tianjin University – School of Marine Sciences & Technology
	JAPAN
55	Kobe University
	TURKEY
89	Istanbul Technical University (ITU)
	NORTH AMERICA
	CANADA
98	Memorial University of Newfoundland (MUN)



Brunei Darussalam

The Universiti Brunei Darussalam is guided by its four core values; people, expertise, relevance and leadership. These values are used as yardsticks in the development and running of eight academic faculties, eight research institutes and two support centres ranging from Islamic Studies, Business, Arts, Science, Health Sciences, Asian Studies, Policy Studies, Education, Biodiversity and Integrated Technologies.

Course Offered

<https://ubd.edu.bn/admission/international-exchange/ubd-student-exchange-programme/august-modules-for-ubd-sep.html>

Program: Student Exchange

Academic Period

1st Semester: Early August-Mid December
2nd Semester: January-May

Minimum GPA

2.75

Quota

Maximum 5 students for each semester

Minimum TOEFL

550 (TOEFL/EFL)

Living Cost*

\$300 – 450 USD/Month

Minimum IELTS

6.0 overall (IBT)

Deadline

1st Semester: Early May
2nd Semester: End of September

**Living expenses reference:*

<http://international.ulm.ac.id/wp-content/uploads/2018/02/UBD-Exchange-Factsheet-S1-2018-2019-as-of-14Feb18.pdf>

Grading System

Grade Point	Letter Grade
5.0	A+
4.5	A
4.0	B+
3.5	B
3.0	C+
2.5	C
2.0	D+
1.5	D
1.0	Conditional Pass
0.0	F

Important Notes

TIANJIN UNIVERSITY OF TECHNOLOGY (TUT)



China

Tianjin University of Technology and Education (TUTE) was established in 1979, which is called 'the cradle of cultivating TVET teaching staff in China' with its teaching philosophy of "using mind and hand together" to cultivate the "integrated" polytechnic teachers and advanced technicians, who can get double certificates "degree certificate and technician certificate". It is the only one local university cooperated by China Central Government and Tianjin Municipality.

Course Offered

<https://intip.in/CourseTianjin>

Program: Student Exchange

Academic Period

1st Semester/Fall : September-Mid January
2nd Semester/Spring : February – June

Quota

Unlimited

Living Cost*

\$400-827 USD/Month

Deadline

1st Semester/Fall : End of April
2nd Semester/Spring : End of September

**Living expenses reference:*

<http://sie.tju.edu.cn/en/gytd/>

Minimum GPA

-

Minimum TOEFL

477 (TOEFL/EFL)

Minimum IELTS

5.0 overall (IBT)

Grading System

Letter Grade	Numerical Grade	Letter Grade	Numerical Grade
A	90 – 100	A	85 – 100
B	80 – 89	B	75 – 84
C	70 – 79	C	60 – 74
D	60 – 69	F	0 – 59
F	0 – 59		

Grading scales vary; see above for common scales.

Refers to: <http://sie.tju.edu.cn/en/gytd/>

Important Notes

For more detailed information, please visit bit.ly/its-student-exchange

TIANJIN UNIVERSITY – SCHOOL OF MARINE SCIENCES & TECHNOLOGY

China

Tianjin University of Technology and Education (TUTE) was established in 1979, which is called 'the cradle of cultivating TVET teaching staff in China' with its teaching philosophy of "using mind and hand together" to cultivate the "integrated" polytechnic teachers and advanced technicians, who can get double certificates "degree certificate and technician certificate". It is the only one local university cooperated by China Central Government and Tianjin Municipality.

Course Offered

Program: Student Exchange

Academic Period

1st Semester/Fall : September – Mid January -
2nd Semester/Spring : February – June

Quota

Unlimited

Living Cost*

\$400–827 USD/Month

Deadline

1st Semester/Fall : Mid of April
2nd Semester/Spring : End of October

**Living expenses reference:*
<http://sie.tju.edu.cn/en/gytd/>

Minimum GPA

Minimum TOEFL

477 (TOEFL/EFL)

Minimum IELTS

5.0 overall (IBT)

Grading System

Letter Grade	Numerical Grade	Letter Grade	Numerical Grade
A	90 – 100	A	85 – 100
B	80 – 89	B	75 – 84
C	70 – 79	C	60 – 74
D	60 – 69	F	0 – 59
F	0 – 59		

Grading scales vary; see above for common scales.

Refers to: <http://sie.tju.edu.cn/en/gytd/>

Important Notes

For more detailed information, please visit bit.ly/its-student-exchange

KOBE UNIVERSITY – FACULTY MARITIME SCIENCES

Japan

The Faculty of Maritime Sciences was established in October, 2003 with the integration of Kobe University of Mercantile Marine, which originated from the private Kawasaki Merchant Marine School founded in 1917. The mission of this faculty is to foster experts who possess a comprehensive knowledge of the marine sciences and are able to use this knowledge to contribute to the field of global transportation and logistics.

Course Offered

http://www.maritime.kobe-u.ac.jp/en/graduate/g_subjects_e.html

Program: Student Exchange

Academic Period

1st Semester/Fall : October-February
2nd Semester/Spring : April-Early August

Quota

Unlimited

Living Cost*

\$850-1,599 USD/Month

Deadline

1st Semester/Fall : End of February
2nd Semester/Spring : Mid of September

**Living expenses reference:*

https://www.kobe-u.ac.jp/documents/en/study_in_kobe/admission/KobeUniv.InfoSheet.18-19.pdf

Minimum GPA

-

Minimum TOEFL

500 (TOEFL/EFL)

Minimum IELTS

5.5 overall (IBT)

Grading System

Letter Grade

S

A

B

C

F

Numerical Grade

90-100

80-89

70-79

60-69

<59

Important Notes

For more detailed information, please visit bit.ly/its-student-exchange



Japan

KU is one of the oldest universities in Japan with seven faculties, ten graduate schools and 25 research centers/institutes (as of August 2019) that support a wide spectrum of educational and research activities. Currently, the university is home to around 8,000 undergraduate students and 2,000 graduate students, including 495 international students from 46 countries (as of May 2019). For over 100 years our university has been at the forefront of culture, advancing science and technology, and contributing to the development of the Japanese educational system.

Course Offered

<https://www.kumamoto-u.ac.jp/kokusaikouryu/gaikokujinryuugakusei/kyo-uikuprogram/index-file/step-brochure2018.pdf>

Program: Student Exchange

Academic Period	Minimum GPA
1st Semester/Fall : October-February 2nd Semester/Spring : April-Early August	> 2.75
Quota	Minimum TOEFL
Unlimited	500 (TOEFL/EFL)
Living Cost*	Minimum IELTS
\$850-1,599 USD/Month	5.5 overall (IBT)
Deadline	Scholarship
1st Semester/Fall : End of March 2nd Semester/Spring : Early of Oct	STIBET Scholarship (a non-guaranteed scholarship only for 1 student)
<p><i>*Living expenses reference:</i> https://www.kumamoto-u.ac.jp/media/medialibrary/2017/03/Z2017_E_s.pdf</p>	
Grading System	
Numerical Grade	Significance
90-100	Excellent
80-89	Very Good
70-79	Good
60-69	Fair
0-59	Failure

Important Notes

For more detailed information, please visit bit.ly/its-student-exchange

SHIBAURA INSTITUTE OF TECHNOLOGY



Japan

Shibaura Institute of Technology (SIT) has firmly maintained "learning through practice" as the philosophy in education of engineers ever since Tokyo Higher School of Industry and Commerce, the predecessor to SIT, was established in 1927. In response to the recent progress in the globalization of the economy, SIT is providing an up-to-date framework for "learning through practice" including intensive English Language programs, Project Based Learning programs under multicultural environment, along with many Hands-on subjects that have been preserved through SIT's 91 years of history.

Course Offered

<http://timetable.sic.shibaura-it.ac.jp/table/2019/Timetable8X0318Z1.html>

Program: Student Exchange

Academic Period

1st Semester/Fall : October – February
2nd Semester/Spring : April – Early August

Quota

Unlimited

Living Cost*

\$750–1750 USD/Month

Deadline

1st Semester/Fall : End of March
2nd Semester/Spring : Mid of October

Minimum GPA

> 3.00

Minimum TOEFL

477 (TOEFL/EFL)

Minimum IELTS

5.5 overall (IBT)

Scholarship

SIT Scholarship: 40,000 JPY per month. Sato Yo Scholarship for one year exchange (1 slot)

*Living expenses reference:

https://www.its.ac.id/international/wp-content/uploads/sites/66/2019/10/AY-Guidelines-2020_2021.pdf

Grading System

Letter Grade	Numerical Grade	Grade Point
S	90–100	4
A	80–89	4
B	70–79	3
C	60–69	2
D	50–59	1
F	0–49	0

Important Notes

For more detailed information, please visit bit.ly/its-student-exchange

UNIVERSITI MALAYSIA PAHANG



Malaysia

Established as a technical university in 2002, Universiti Malaysia Pahang (UMP) offers a variety of engineering- and technology-based technical programmes, including high-level Technical and Vocational Education and Training (TVET). Ranked as one of the best in Research and Innovation within the classifications of Malaysia Technical University Network (MTUN) and Non-Research University (Non RU), UMP is steadfastly committed to innovating and developing unique academic programmes through strategic international collaborations.

Course Offered

<http://www.ump.edu.my/en/publications/prospectus/undergraduate-prospectus-20182019>

Program: Student Exchange

Academic Period

1st Semester/Fall : September-Mid January
2nd Semester/Spring : April-Early August

Minimum GPA

-

Quota

Unlimited

Minimum TOEFL

500 (TOEFL/EFL)

Living Cost*

\$300-582 USD/Month

Minimum IELTS

5.5 overall (IBT)

Deadline

1st Semester/Fall : End of February
2nd Semester/Spring : Early of September

**Living expenses reference:*
<https://cir.ump.edu.my/index.php/en/living-in-kuantan>

Grading System

Letter Grade	Numerical Grade	Grade Point
A	80-100	4.00
A-	75-79	3.67
B+	70-74	3.33
B	65-69	3.00
B-	60-64	2.67
C+	55-59	2.33
C	50-54	2.00
C-	47-49	1.67
D+	44-46	1.33
D	40-43	1.00
E	25-39	0.67
F	0-24	0.00

Important Notes

For more detailed information, please visit bit.ly/its-student-exchange

UNIVERSITI MALAYSIA PERLIS



Malaysia

Universiti Malaysia Perlis (UniMAP) is Malaysia's 17th public institution of higher learning. Approved by the Malaysian Cabinet in May 2001, it started off as a university college – Kolej Universiti Kejuruteraan Utara Malaysia (KUKUM). The institution's first intake comprised 116 engineering students who began classes in June 2002. In February 2007, KUKUM was upgraded to a full-fledged university and renamed Universiti Malaysia Perlis (UniMAP). The university is one of only four technical universities in Malaysia.

Course Offered

<https://www.unimap.edu.my/images/bukuPanduan/UNIMAP-BPA-SarjanaMuda-2019-2020-r1.pdf>

Program: Student Exchange

Academic Period

1st Semester/Fall : September-Mid January
2nd Semester/Spring : February – Jun

Minimum GPA

-

Quota

Unlimited

Minimum TOEFL

477 (TOEFL/EFL)

Living Cost*

\$220 -597 USD/Month

Minimum IELTS

5.5 overall (IBT)

Deadline

1st Semester/Fall : Mid of February
2nd Semester/Spring : Mid of September

**Living expenses reference:*

<https://www.unimap.edu.my/index.php/en/programme-fees>

Grading System

Letter Grade	Numerical Grade	Grade Point
A+	79.5–100	4.00
A-	74.5–79.4	3.75
B+	69.5–74.4	3.50
B	64.5–69.4	3.00
B-	59.5–64.4	2.75
C+	54.5–59.4	2.50
C	49.5–54.4	2.00
C-	44.5–49.4	1.75
D+	39.5–44.4	1.50
D	34.5–39.5	1.00
D-	29.5–34.4	0.75
F	0–29.4	0.00

Important Notes

For more detailed information, please visit bit.ly/its-student-exchange



Malaysia

University of Malaya is currently placed at number 70 in the 2020 QS World University Ranking. It is the only Malaysian university listed in the world's top 100 universities, and the top 1% of world's universities. Granted self-accredited educational institution status since 2009, the academic programmes are recognized world-wide including a number of courses that are accredited by international accreditation bodies.

Course Offered

<https://docs.google.com/spreadsheets/d/1-TlqzCNzPvWsWw4kVNV40UBwZ2s4NQW6Wqkq3xe1qHo/edit#gid=1215156339>

Program: Student Exchange

Academic Period

1st Semester/Fall : September-Mid January
2nd Semester/Spring : February-June

Quota

Unlimited

Living Cost*

\$350–693 USD / Month

Deadline

1st Semester: Mid of April
2nd Semester: Mid of October

*Living expenses reference:

https://isc.um.edu.my/img/files/UM_fact%20sheet/20200327%20Universiti%20Malaya%20Fact%20Sheet%20for%20Inbound%20Mobility%20Student%202020_2021.pdf

Minimum GPA

3.00

Minimum TOEFL

500 (TOEFL/EFL)

Minimum IELTS

5.5–6.5 overall (IBT)

Grading System

Grade Point	Numerical Grade	Letter Grade
4.0	80–100	A
3.7	75–79	A-
3.3	70–74	B+
3.0	65–69	B
2.7	60–64	B-
2.3	55–59	C+
2.0	50–54	C
1.7	45–49	C-
1.3	40–44	D+
1.0	35–39	D
0.0	0–38	F

Important Notes

For more detailed information, please visit bit.ly/its-student-exchange



Malaysia

UTM is a leading innovation-driven entrepreneurial research university in engineering, science and technology. UTM as the biggest postgraduate research university in technology has also established a reputation for innovative education and cutting-edge research, with a vision towards the development of creative human capital and advancement technological innovation.

Course Offered

<https://www.utm.my/international/courses-in-utm/>

Program: Student Exchange

Academic Period

1st Semester/Fall : September-January
2nd Semester/Spring : February-June

Quota

Unlimited

Living Cost*

\$385-597 USD/Month

Deadline

1st Semester/Fall : End of April
2nd Semester/Spring : End of October

*Living expenses reference:

<https://admission.utm.my/files/2019/02/General-Booklet-February-2019.pdf>

Grading System

Grade Point	Numerical Grade	Letter Grade
4.0	90 – 100	A+
4.0	80 – 89	A
3.67	75 – 79	A-
3.33	70 – 74	B+
3.0	65 – 69	B
2.67	60 – 64	B-
2.33	55 – 59	C+
2.0	50 – 54	C
1.67	45 – 49	C-
1.33	40 – 44	D+
1.0	35 – 39	D
0.67	30 – 34	D-
0.0	0 – 29	E

Important Notes



Philippines

Founded in 1925 by Don Tomas Mapúa, an architecture graduate of Cornell University in the United States and the first registered architect of the Philippines, Mapúa University is the Philippines' premier engineering and technological university. Mapúa is a top Asian university, entering the prestigious Quacquarelli Symonds (QS) Asia University Rankings for 2019. It is a QS-rated university, obtaining a 3-star overall rating for excellence and 5-star rating in the categories of employability, facilities, and social responsibility. It has also been recognized by Times Higher Education (THE) for its social and economic impact, placing in the Partnership for the Goals category of the inaugural THE University Impact Rankings.

Course Offered

<http://bit.ly/CourseExchangeMapua2019>

Program: Student Exchange

Academic Period

1st Semester/Q 1 & 2 : August – December
2nd Semester/Q 3 & 4 : January – June

Minimum GPA

-

Quota

Unlimited

Minimum TOEFL

477 (TOEFL/EFL)

Living Cost*

300~693 USD/month

Minimum IELTS

5.0 overall (IBT)

Deadline

1st Semester: End of April
2nd Semester: Early of November

**Living expenses reference:*

<https://bit.ly/31QH2mj>

Grading System

Grade Symbol	Significance	Grade Symbol	Significance
1.00	Excellence	I	Incomplete
1.25	Highly Meritorious	ABS	Absent
1.50	Meritorious	W	Official Withdrawal
1.75	Meritorious	IP	In Progress
2.00	Very Satisfactory	P	Passed
2.25	Very Satisfactory	F	Failed
2.50	Satisfactory	Au	Audit
2.75	Satisfactory		
3.00	Lowest Passing Grade		
5.00	Failure		

Refers to: <https://intip.in/Mapuagrading>

Important Notes

Mapua University is using a quarter system. ITS Students need to take 2 quarters for one semester exchange or combination of 1 quarter for exchange and 1 quarter for research

For more detailed information, please visit bit.ly/its-student-exchange

THE UNIVERSITY OF PHILIPPINES DILIMAN (UP DILIMAN)



Philippines

As of January 2020, UPD had 250 academic programs, 71 of which were in the undergraduate level, 100 in the master's, professional master's, Juris Doctor, BA-MA Honors, and 48 in the doctoral levels. Seven Associate in Arts and 24 graduate diploma programs are also offered, with extension programs in Pampanga and Olongapo City and currently under development, specialized programs at the UP Professional Schools at the Bonifacio Global City.

Course Offered

<https://upd.edu.ph/academics/undergraduate/>

Program: Student Exchange

Academic Period

1st Semester : August – December
2nd Semester : January – May

Quota

Unlimited

Living Cost*

\$300–540 USD/Month

Deadline

1st Semester/Fall : End of April
2nd Semester/Spring : End of September

**Living expenses reference:*

<https://intip.in/CostUPDiliman>

Minimum GPA

-

Minimum TOEFL

477 (TOEFL/EFL)

Minimum IELTS

5.0 overall (IBT)

Grading System

Letter Grade	Grade Point	Significance
A	4	Excellence
A-	3.625	
B+	3.25	Very Good
B	2.875	
B-	2.5	Good
C+	2.125	
C	1.75	Satisfactory
C-	1.375	
D	1	Pass
F	0	Fail

Refers to: <https://www.its.ac.id/international/wp-content/uploads/sites/66/2019/09/UP-Diliman-Fact-Sheet-August-2019.pdf>

Important Notes

For more detailed information, please visit bit.ly/its-student-exchange



CHONNAM NATIONAL UNIVERSITY

South Korea

Since its foundation in 1952, CNU has been the proud center for the region's globalization efforts. Now, CNU is a home to some 1,400 international students from every corner of the world, and it sends and receives more than 1,200 students every year through partnerships with some 450 universities in 57 different countries. CNU also has outstanding Korean language programs operated by its Language Education Center, teaching the Korean language to some 1,300 students annually. CNU also has several CNU Centers and CNU Korean Programs overseas in China and Vietnam. It also recently opened its first satellite office in the State of New Jersey in the U.S.

Course Offered

<http://international.jnu.ac.kr/user/indexSub.action?codyMenuSeq=19244&siteId=international&menuUIType=tab>

Program: Student Exchange

Academic Period

1st Semester/Fall : End August-December
2nd Semester/Spring : End February-June

Quota

2-4 students each semester

Living Cost*

\$714-1,196 USD/Month

Deadline

1st Semester/Fall : Mid of April
2nd Semester/Spring : Mid of October

*Living expenses reference:

1. http://international.jnu.ac.kr/user/international/download/2020_down/2021admissions_guide_en.pdf
2. <http://www.iad.unimas.my/images/ChonnamNationalUni/ChonnamNationalUnivINFOSHEET.pdf>

Minimum GPA

-

Minimum TOEFL

477 (TOEFL/EFL)

Minimum IELTS

5.5 overall (IBT)

Grading System

Grade Point	Letter Grade
4.5	A+
4.0	A
3.5	B+
3.0	B
2.5	C+
2.0	C
1.5	D+
1.0	D
0.0	F

Important Notes

For more detailed information, please visit bit.ly/its-student-exchange



South Korea

Chung-Ang University is a private institution with 30,000 students and 982 faculty members. It consists of 10 undergraduate colleges and 16 graduate schools. It operates two campuses, in Seoul and Anseong, Korea. Established in 1918, CAU has endured through the painful course of Korea's modern history, upholding its ideal of "Justice and Truth". Since then, CAU has taken a leading role in nurturing intellectuals of the nation. Respected as a leading institution providing quality education, CAU has sped up the pace of innovation in local education.

Course Offered

<https://www.its.ac.id/international/wp-content/uploads/sites/66/2020/05/4.-Academic-Year-2019-2020-Courses-Offered-in-English.pdf>

Program: Student Exchange

Academic Period

1st Semester/Fall : End August-December
2nd Semester/Spring : End February-June

Quota

2 students

Living Cost*

\$714-1,196 USD/Month

Deadline

1st Semester/Fall : Mid of May
2nd Semester/Spring : Mid of October

*Living expenses reference:

1. https://neweng.cau.ac.kr/cms/FR_CON/index.do?MENU_ID=350
2. https://neweng.cau.ac.kr/cms/FR_CON/index.do?MENU_ID=380

Minimum GPA

-

Minimum TOEFL

477 (TOEFL/EFL)

Minimum IELTS

5.5 overall (IBT)

Grading System

Grade Point	Letter Grade
4.5	A+
4.0	A
3.5	B+
3.0	B
2.5	C+
2.0	C
1.5	D+
1.0	D
0.0	F

Important Notes



(Jukjeon Campus) – South Korea

Dankook University was founded in 1947 as the first 4-year private university in Korea following liberation based on our founder's noble idea that rebuilding the nation and shaping intellectuals is what education is about. Established with domestic fund, Dankook University has been practicing its educational mission based on the founding spirits of 'National Salvation, Self-Reliance, and Independence' and the guiding principles of 'Truth and Services' to nurture true talent and pursue academic studies.

Course Offered

<https://www.dankook.ac.kr/en/web/international/courses-in-english>

Program: Student Exchange

Academic Period

1st Semester/Fall : End August-December
2nd Semester/Spring : End February-June

Quota

Maximum 5 students for each semester

Living Cost*

\$714-1,196 USD / Month

Deadline

1st Semester/Fall : Mid of April
2nd Semester/Spring : Mid of October

Students will also be charged a cleaning fee of 20,000 KRW upon arrival

**Living expenses reference:*
<https://www.dankook.ac.kr/web/international/fees2>

Grading System

Letter Grade	Numerical Grade	Grade Point
A+	95 – 100	4.5
A	90 – 94	4.0
B+	85 – 89	3.5
B	80 – 84	3.0
C+	75 – 79	2.5
C	70 – 74	2.0
D+	65 – 69	1.5
D	60 – 64	1.0
F	0 – 59	0.0

Minimum GPA

-

Minimum TOEFL

477 (TOEFL/EFL)

Minimum IELTS

5.5 overall (IBT)

Important Notes

All incoming exchange students must have health insurance that covers the period of their stay in Korea. Students are required to purchase their own health insurance in their home country and submit proof of health insurance to us before coming to Korea. The insurance policy should cover sickness, accident, and health. Students should also make sure to know how the health insurance works if any medical problems occur.

In accordance with the requirements of the Korean Immigration Service and our dormitory regulation, all successful applicants are required to submit proof of an authorized tuberculosis test (through X-ray, skin, or blood) result that is taken within 45 days prior to their arrival in Korea. Students will be asked to attach the scanned copy of their tuberculosis test result on the online application later in February for Spring Semester and August for Fall Semester.

For more detailed information, please visit bit.ly/its-student-exchange



KUMOH NATIONAL INSTITUTE OF TECHNOLOGY

South Korea

Kumoh National Institute of Technology was founded as a specialized engineering college to foster outstanding talents at industrial sites that will lead our Korean economic development and it has continuously grown quantitatively and qualitatively, taking advantage of the nationalization in 1990 and campus relocation in 2004. Now, facing the new environment of the Fourth Industrial Revolution, our university also wants everyone to unite their minds with a 'new start'. Our university has a system of administration, finance, and communication for efficient college management. Through education, research and foreign cooperation, which are the unique functions of universities, we will make a university where students, professors, and staff are all happy and contribute to the local community and our country.

Program: Student Exchange

Academic Period

1st Semester/Fall : End August-December
2nd Semester/Spring : End February-June

Quota

Unlimited

Living Cost*

\$714-1,196 USD / Month

Deadline

1st Semester/Fall : Mid of April
2nd Semester/Spring : Mid of October

**Living expenses reference:*
http://eng.kumoh.ac.kr/eng/sub03_02_02.do

Minimum GPA

-

Minimum TOEFL

477 (TOEFL/EFL)

Minimum IELTS

5.5 overall (IBT)

Grading System

Letter Grade	Numerical Grade	Grade Point
A+	95 – 100	4.5
A	90 – 94	4.0
B+	85 – 89	3.5
B	80 – 84	3.0
C+	75 – 79	2.5
C	70 – 74	2.0
D+	65 – 69	1.5
D	60 – 64	1.0
F	0 – 59	0.0

Important Notes

They request Health Insurance for exchange students staying in Korea. Students can purchase health insurance from their home countries, or they can purchase it through the International Office at KIT.

All students have been requested to submit the health and medical clearance form with their online applications as part of the required documents.

According to government regulation, students from certain designated countries will need to get re-tested for tuberculosis at the district public health center in Korea upon arrival.

Students need to obtain the D-2 Visa with the admission and invitation letter which will be issued by KIT.

For more detailed information, please visit bit.ly/its-student-exchange



POHANG UNIVERSITY OF SCIENCE & TECHNOLOGY

South Korea

POSTECH is Korea's first research university, established in a period when Korea was still chasing after advanced technologies of developed nations. It was founded on the belief that Korea needed a university that can spearhead global science and technology. POSTECH has been a university that constantly pioneered change and innovation in higher education. We boldly introduced an advanced education system that only a small elite university can implement and nurtured young talent essential to society. In research, we led technological innovation demanded by the times with superb research results.

Program: Student Exchange

Academic Period

1st Semester/Fall : Mid August-December
2nd Semester/Spring : Mid February-June

Minimum GPA

-

Quota

Unlimited

Minimum TOEFL

477 (TOEFL/EFL)

Living Cost*

\$714-1,196 USD/Month

Minimum IELTS

5.5 overall (IBT)

Deadline

1st Semester/Fall : Early May
2nd Semester/Spring : 2nd Week of Nov

*Living expenses reference:

http://international.postech.ac.kr/wp-content/uploads/2017/08/2018-Spring-POSTECH-ISEP_FACT-SHEET.pdf

Grading System

Grade Point	Letter Grade
4.3	A+
4.0	A
3.7	A-
3.3	B+
3.0	B
2.7	B-
2.3	C+
2.0	C
1.7	C-
1.3	D+
1.0	D
0.7	D-
0.0	F

Important Notes

For more detailed information, please visit bit.ly/its-student-exchange



Taiwan

Asia University (AU) is a visionary, pioneering, and fast-growing school, and was founded with the goal of establishing a remarkable and comprehensive university with international competitiveness. Karl Jaspers, a German philosopher, believed that an ideal university must have three features- academic teaching, scientific research, and a creative cultural life, which exactly are what we have been pursuing for years since the establishment of the school. In the past of 19 years, AU has demonstrated excellence in academic performance, and was ranked as the first in many higher education evaluations conducted by the Ministry of Education (MOE).

Course Offered

<http://ciae.asia.edu.tw/programs-english/>

Program: Student Exchange

Academic Period

1st Semester/Fall : September-Mid January
2nd Semester/Spring : February-June

Minimum GPA

3.00

Quota

Unlimited

Minimum TOEFL

500 (TOEFL/EFL)

Living Cost*

\$442-744 USD/Month

Minimum IELTS

5.0 overall (IBT)

Deadline

1st Semester: End of April
2nd Semester: Mid of October

**Living expenses reference:*

<http://flts.asia.edu.tw/file/Campus%20Life%20in%20Asia%20University.pdf>

Grading System

Important Notes



Taiwan

The long-term vision for FCU is to establish itself as a prestigious Asia Pacific university characterized by continuous excellence in education and breakthrough research. FCU, furthermore, strives to cultivate the next generation of leaders by maintaining a broad world-view and equipping students with professional knowledge and skills, and an appreciation for the arts and humanities. Moreover, in the design of its new Shuinan campus, sustainability concepts will be incorporated to complement the development of the Taichung Gateway District and College Town. The goal is to become a campus with low carbon emissions, thereby fulfilling FCU's environmental and conservation responsibilities.

Course Offered

<http://service005.sds.fcu.edu.tw/?lang=en>

Program: Student Exchange

Academic Period

1st Semester/Fall : September-Mid January
2nd Semester/Spring : February-June

Quota

Unlimited

Living Cost*

\$442-744 USD/Month

Deadline

1st Semester: End of March
2nd Semester: Early of September

*Living expenses reference:
<http://www.clc.fcu.edu.tw/index/content/sn/28>

Minimum GPA

2.75

Minimum TOEFL

477 (TOEFL/EFL)

Minimum IELTS

5.5 overall (IBT)

Grading System

Letter Grade	Numerical Grade
A	80-100
B	70-79
C	60-69
D	50-59
F	<49

Important Notes

NATIONAL CENTRAL UNIVERSITY



Taiwan

National Central University (NCU) is a university with long-standing traditions in Taiwan. Founded in Nanjing in 1915, NCU was the leading academic center in Southeast China; the phrase "North the Peking University; South the Central University" at that time revealed the significance of NCU. NCU was later re-established in Taiwan in 1962 and started the development on the basis of Geophysics. After our endeavor over 50 years, NCU has expanded its school size and had great achievements both in academic and research development. NCU is now one of the leading universities in Taiwan.

Course Offered

<https://drive.google.com/open?id=1-2cQH69SYc6CHi2oVE5whZbxfvAjYVXr>

Program: Student Exchange

Academic Period

1st Semester/Fall : September-Mid January
2nd Semester/Spring : February-June

Quota

Unlimited

Living Cost*

\$300-750 USD/Month

Deadline

1st Semester/Fall : Early of May
2nd Semester/Spring : End of October

**Living expenses reference:*

<https://cis.ncu.edu.tw/admissions/menu.content/view/sn/79>

Minimum GPA

-

Minimum TOEFL

477 (TOEFL/EFL)

Minimum IELTS

5.5 overall (IBT)

Grading System

Letter Grade	Numerical Grade	Grade Point
A	80 - 100	4
B	70-79	3
C	60-69	2
F	1-59	1
F	0	0

Important Notes

For more detailed information, please visit bit.ly/its-student-exchange

NATIONAL CHUNG HSING UNIVERSITY



Taiwan

NCHU offers an open learning environment. We aim to develop students with the ability to think independently, invigorated with the spirit of lifelong learning. A journey is taken one step at a time. The founding philosophy of our school is to imbue students with certain core values, especially integrity, humility, professionalism, and diligence. As a leader in global academic development, Taiwan is interconnected with educational institutions around the world. This allows NCHU to seamlessly integrate classic traditions with modern state of the art ideas and facilities. Ultimately, National Chung Hsing University provides students with the opportunity to experience a world-class research university.

Program: Student Exchange

Academic Period

1st Semester/Fall : September-Mid January
2nd Semester/Spring : End February-June

Quota

Unlimited

Living Cost*

\$442-744 USD/Month

Deadline

1st Semester/Fall : End of March
2nd Semester/Spring : Early of Oct

Minimum GPA

-

Minimum TOEFL

477 (TOEFL/EFL)

Minimum IELTS

-

*Living expenses reference:

[https://www.oia.nchu.edu.tw/index.php/en/cooperationcategory-en/47-incoming-exchange-students-pax-en/70-pax-campuslife-en#:~:text=The%20cost%20for%20a%20meal,NT%2450%20\(US%241.50\).](https://www.oia.nchu.edu.tw/index.php/en/cooperationcategory-en/47-incoming-exchange-students-pax-en/70-pax-campuslife-en#:~:text=The%20cost%20for%20a%20meal,NT%2450%20(US%241.50).)

Grading System

Letter Grade	Numerical Grade	Grade Point
A+	95 – 100	4.5
A	90 – 94	4.0
B+	85 – 89	3.5
B	80 – 84	3.0
C+	75 – 79	2.5
C	70 – 74	2.0
D+	65 – 69	1.5
D	60 – 64	1.0
F	0 – 59	0.0

Important Notes

For more detailed information, please visit bit.ly/its-student-exchange

NATIONAL SUN YAT-SEN UNIVERSITY



Taiwan

National Sun Yat-sen University (NSYSU) is comprised of seven colleges: Liberal Arts, Science, Engineering, Management, Marine Sciences, Social Sciences, and Si-Wan. The university places equal emphasis on both teaching and research of Humanities, Sciences, and Engineering. Since 2006, NSYSU has received additional funding from the Ministry of Education (MOE) through the "Aim for the Top University Plan" and "Higher Education Sprout Project" to enhance teaching and research. Outstanding academic achievements exhibited by many departments have landed NSYSU among the world's top universities in many academic rankings.

Course Offered

<http://selcrs3.nsysu.edu.tw/menu1/qrycrsfrm.asp?HIS=2&eng=1>

Program: Student Exchange

Academic Period

1st Semester/Fall : September-Mid January
2nd Semester/Spring : February – June

Quota

Unlimited

Living Cost*

\$400–687 USD/Month

Deadline

1st Semester/Fall : End of April
2nd Semester/Spring : Early November

**Living expenses reference:*

<https://www.cm.nsysu.edu.tw/p/16-1024-225553.php?Lang=en>

Minimum GPA

-

Minimum TOEFL

477 (TOEFL/EFL)

Minimum IELTS

5.5 overall (IBT)

Grading System

Letter Grade	Numerical Grade	Grade Point
A+	90–100	4.3
A	85–89	4.0
A-	80–84	3.7
B+	77–79	3.3
B	73–76	3.0
B-	70–72	2.7
C+	67–69	2.3
C	63–66	2.0
C-	60–62	1.7
D	50–59	1.0
E	40–49	0.8
F	<39 (incl.)	0
X	0	0

Important Notes

For more detailed information, please visit bit.ly/its-student-exchange

NATIONAL TAIWAN UNIVERSITY OF SCIENCE & TECHNOLOGY (NTUST / TAIWAN TECH)



Taiwan

The National Taiwan University of Science and Technology (Taiwan Tech), under the outstanding leadership of successive presidents, has been recognized by all sectors of society for its academic and practical achievements in such areas as cooperation with industry, promotion of entrepreneurship, and technology licensing. The campus is focusing the efforts on structuring a campus that nurtures creativity, with a vision of building a world-class university through international outreach and applied research.

Course Offered

<https://querycourse.ntust.edu.tw/querycourse/>

Program: Student Exchange

Academic Period

1st Semester/Fall : September – Mid January -
2nd Semester/Spring : February – June

Minimum GPA

Quota

10 students per semester

Minimum TOEFL

477 (TOEFL/EFL)

Living Cost*

\$450–989 USD/Month

Minimum IELTS

5.0 overall (IBT)

Deadline

1st Semester/Fall : Mid of March
2nd Semester/Spring : Early of September

**Living expenses reference:*
<https://intip.in/NTUSTcost>

Grading System

Letter Grade	Numerical Grade	Grade Point
A+	95	4.3 (Start from Fall 2016) / 4.0 (Academic Year 2011 to 2015)
A	87	4.0
A-	82	3.7
B+	78	3.3
B	75	3.0
B-	71	2.7
C+	68	2.3
C	65	2.0
C-	61	1.7
D	55	1.0
E	49	0.0
X	0	0.0

Refers to: [https://www.academic.ntust.edu.tw/ezfiles/1/1001/img/135/GPAGradingSystem\(fromSep2015\).pdf](https://www.academic.ntust.edu.tw/ezfiles/1/1001/img/135/GPAGradingSystem(fromSep2015).pdf)

Important Notes

For more detailed information, please visit bit.ly/its-student-exchange

NATIONAL TSING-HUA UNIVERSITY (NTHU)



Taiwan

Since its relocation, NTHU has developed into a comprehensive research university offering a full range of degree programs in science, technology, engineering, humanities, social sciences, and management. NTHU consistently ranks as one of the premier universities in East Asia, and is widely recognized as a leading incubator for future leaders. Our outstanding alumni highlight the success of NTHU students, including Nobel Physics laureates Dr. Cheng-Ning Yang and Dr. Tsung-Dao Lee, Nobel Chemistry laureate Dr. Yuan-Tseh Lee, and Wolf Prize winner in mathematics Dr. Shiing-Shen Chern.

Course Offered

<https://intip.in/CourseNTHU>

Program: Student Exchange

Academic Period

1st Semester/Fall : September – Mid January -
2nd Semester/Spring : February – June

Quota

Unlimited

Living Cost*

\$400-852 USD/Month

Deadline

1st Semester/Fall : Mid of March
2nd Semester/Spring : Early of September

**Living expenses reference:*

<https://intip.in/costNTHU>

Minimum GPA

Minimum TOEFL

477 (TOEFL/EFL)

Minimum IELTS

5.0 overall (IBT)

Grading System

Letter Grade	Numerical Grade	Grade Point
A+	90 – 100	4.3
A	85 – 89	4
A-	80 – 84	3.7
B+	77 – 79	3.3
B	73 – 76	3
B-	70 – 72	2.7
C+	67 – 69	2.3
C	63 – 66	2
C-	60 – 62	1.7
D	50 – 59	1
E	1 – 49	0

Refers to: <https://registra.site.nthu.edu.tw/var/file/211/1211/img/75/GPAConversionChart.pdf>

Important Notes

For more detailed information, please visit bit.ly/its-student-exchange



NATIONAL YUNLIN UNIVERSITY OF SCIENCE AND TECHNOLOGY

Taiwan

National Yunlin University of Science and Technology (YunTech) was founded in 1991. Yuntech is constituted of 5 colleges, namely College of Engineering, College of Management, College of Design, College of Humanities and Applied Science, and College of Future. Through joint effort, the School currently offers 22 Departments, 26 Master Programs, and 13 Doctoral Programs. Nearly 10,000 students have chosen to pursue their education here. More than half of our teachers and instructors have acquired Doctoral qualifications from prestigious universities in Europe, United States, and Japan. At YunTech, over 91% of the teaching staff has hands-on experience, and more than 80% engage in industry-university cooperation. Consequently, YunTech takes the lead in the achievements of the industry-and-university cooperation in Taiwan. According to the 2019 University Impact Rankings announced by Times Higher Education, the ranking of its total score fell between No. 101 and No. 200 worldwide.

Course Offered

http://www2010.yuntech.edu.tw/english/index.php?option=com_content&task=view&id=8114&Itemid=952

Program: Student Exchange

Academic Period

1st Semester/Fall : September-Mid January
2nd Semester/Spring : February-June

Minimum GPA

-

Quota

Unlimited

Minimum TOEFL

477 (TOEFL/EFL)

Living Cost*

\$714-1,196 USD / Month

Minimum IELTS

5.5 overall (IBT)

Deadline

1st Semester/Fall : Early May
2nd Semester/Spring : 2nd Week of Nov

**Living expenses reference:*

http://www2010.yuntech.edu.tw/english/index.php?option=com_content&task=view&id=8025&Itemid=938

Grading System

Important Notes

For more detailed information, please visit bit.ly/its-student-exchange



Taiwan

Providence University in Taiwan was founded by the Sisters of Providence of Saint Mary's of the Woods, Indiana, USA in 1956. Since then, PU has been recognized for international campus atmosphere and international collaboration has also been one of the most important strategies for the development of the university.

Course Offered

<http://esquery.tku.edu.tw/acad/default.asp?func=eng>
https://drive.google.com/file/d/1d4vCEK0_7NmMyNRKdWGAKstpxsNsp7Su/view

Program: Student Exchange

Academic Period

1st Semester/Fall : September-Mid January
 2nd Semester/Spring : February-June

Minimum GPA

-

Quota

Unlimited

Minimum TOEFL

477 (TOEFL/EFL)

Living Cost*

\$1,001-1,558 USD/Month

Minimum IELTS

5.5 overall (IBT)

Deadline

1st Semester/Fall : Mid of May
 2nd Semester/Spring : Mid of October

*Living expenses reference:

1. https://neweng.cau.ac.kr/cms/FR_CON/index.do?MENU_ID=350
2. https://neweng.cau.ac.kr/cms/FR_CON/index.do?MENU_ID=380

Grading System

Grade Point	Numerical Grade	Letter Grade
4.5	95 - 100	A+
4.0	90 - 94	A
3.5	85 - 89	B+
3.0	80 - 84	B
2.5	75 - 79	C+
2.0	70 - 74	C
1.5	65 - 69	D+
1.0	60 - 64	D
0.0	0 - 59	F

Important Notes



Taiwan

Tamkang is a university of ideals, vision, and creativity. It sees the pursuit of excellence and ongoing innovation as characterizing sustaining its fundamental management philosophy. Over the last 60-plus years, since its foundation, TKU has focused on developing academic research, teaching, and learning services with an innovative spirit. It was the first university in Taiwan to employ Total Quality Management (TQM), which it introduced in 1992. In 2006, the Tamkang Quality Award was initiated to recognize outstanding departments committed to TQM. It has generated impressive results and garnered positive public feedback. TQM efforts were significant in helping TKU win the prestigious National Quality Award in 2009.

Course Offered

<http://esquery.tku.edu.tw/acad/default.asp?func=eng>
https://drive.google.com/file/d/1d4vCEK0_7NmMyNRKdWGAKstpxsNsp7Su/view

Program: Student Exchange

Academic Period

1st Semester/Fall : September-Mid January
2nd Semester/Spring : February-June

Quota

Unlimited

Living Cost*

\$584-989 USD/Month

Deadline

1st Semester/Fall : Mid of April
2nd Semester/Spring : Early of November

*Living expenses reference:

[http://english.tku.edu.tw/faq.asp#:~:text=Basic%20living%20expenses%20\(including%20housing,of%20an%20apartment%20or%20room\)](http://english.tku.edu.tw/faq.asp#:~:text=Basic%20living%20expenses%20(including%20housing,of%20an%20apartment%20or%20room))
<https://uwf.edu/academic-engagement-and-student-affairs/departments/study-abroad/exploring-study-abroad/exchange-programs/tamkang-university/>

Grading System

Letter Grade	Numerical Grade	Grade Point
A	80-100	4
B	70-79	3
C	60-69	2
D	50-59	1
E	<49	0

Minimum GPA

-

Minimum TOEFL

477 (TOEFL/EFL)

Minimum IELTS

5.5 overall (IBT)

Important Notes



Taiwan

Established in 1989, Yuan Ze University may be young by traditional standards, yet it has been recognized as a model for newly emerging universities within the shortest period. As the first and the only university to win the National Quality Award in 2003, Yuan Ze received an award from the Ministry of Education for the Teaching Excellence Project in 2005. Successively, it has been designated by the MOE as one of the top 12 universities in Taiwan, receiving an award for the "Aim for the Top University and Elite Research Center Development Project" since 2005. Granted with the highest honor in teaching, research and administration, Yuan Ze has become a marvel of higher education, in Taiwan.

Course Offered

<http://www.gao.yzu.edu.tw/en/modules/news/article.php?storyid=23>

Program: Student Exchange

Academic Period

1st Semester/Fall : September-Mid January
2nd Semester/Spring : February – June

Minimum GPA

-

Quota

Unlimited

Minimum TOEFL

477 (TOEFL/EFL)

Living Cost*

\$506-852 USD/Month

Minimum IELTS

5.5 overall (IBT)

Deadline

1st Semester/Fall : 3rd Week of March
2nd Semester/Spring : 3rd Week of Oct

**Living expenses reference:*

<http://www.gao.yzu.edu.tw/en/modules/news/article.php?storyid=33>

Grading System

Letter Grade	Numerical Grade
A+	96
A	90
A-	84
B+	78
B	75
B-	72
C+	68
C	65
C-	62
D	50

Important Notes

All incoming students need to take a health examination upon arrival. If you have taken one when applying for your visa, please bring the results certified by our missionary office with you to be exempt from certain items.

CHULALONGKORN UNIVERSITY

INTERNATIONAL SCHOOL OF ENGINEERING



Thailand

The main mission of Chulalongkorn University is to be the center for academic learning and professional excellence. Through the pursuit, development, dissemination and application of knowledge, Chulalongkorn University works to educate students with professional know-how and research skills, as well as preserve the arts, culture, and values. In addition to academic knowledge and learning, the university hopes to instill in students a sense of morality, social responsibility, and public service.

Course Offered

<http://www.ise.eng.chula.ac.th/academics>

Program: Student Exchange

Academic Period

1st Semester : Early August-Mid December
2nd Semester/Spring : January – May

Quota

Unlimited

Living Cost*

\$400–978 USD/Month

Deadline

1st Semester/Fall : Early of March
2nd Semester/Spring : 2End of September

**Living expenses reference:*

<https://www.chula.ac.th/en/admissions/tuition-and-fees/>

Grading System

Information could be found at:

<https://www.inter.chula.ac.th/en/wp-content/uploads/2018/06/Regulations-and-Announcement.pdf>

Minimum GPA

>2.75

Minimum TOEFL

550 (TOEFL/EFL)

Minimum IELTS

6.0 overall (IBT)

Important Notes

For more detailed information, please visit bit.ly/its-student-exchange

KING MONGKUT'S INSTITUTE OF TECHNOLOGY LADKRABANG (KMITL)



Thailand

Founded in 1996, King Mongkut's Institute of Technology Ladkrabang is a non-profit public higher-education institution located in the suburban setting of the large metropolis of Bangkok (population range of over 5,000,000 inhabitants). This institution also has a branch campus in Chumphon. Officially recognized by the Ministry of Higher Education, Science, Research and Innovation of Thailand, King Mongkut's Institute of Technology Ladkrabang (KMITL) is a coeducational Thai higher education institution. King Mongkut's Institute of Technology Ladkrabang (KMITL) offers courses and programs leading to officially recognized higher education degrees such as bachelor degrees, master degrees, doctorate degrees in several areas of study.

Course Offered
<https://intip.in/courseKMITL>

Program: Student Exchange

Academic Period

1st Semester : August – December
2nd Semester : January – May

Quota

Unlimited

Living Cost*

\$350–978 USD/Month

Minimum GPA

>3.00

Minimum TOEFL

5 (TOEFL/EFL)

Minimum IELTS

6.0 overall (IBT)

Deadline Application at ITS

1st Semester/Fall : End of April
2nd Semester/Spring : Early of October

**Living expenses reference:*
<https://intip.in/KMITLcost>

Grading System

Letter Grade	Significance	Grade Symbol	Significance
A	Excellence	S	Satisfactory
B+	Very Good	U	Unsatisfactory
B	Good	O	Outstanding
C+	Fairly Good	G	Good
C	Fair	P	Pass
D+	Poor	I	Incomplete
D	Very Poor		
F	Failure		

Refers to: <https://intip.in/gradeKMITL>

Important Notes

For more detailed information, please visit bit.ly/its-student-exchange



KING MONGKUT'S UNIVERSITY OF TECHNOLOGY NORTH BANGKOK

International College, Thailand

The International College of KMUTNB was established as part of the KMUTNB's international strategy under the 11th Higher Education Development Plan (2012–2016) as a response to the ever changing global business environment marked by the growth of borderless trade, technology, and the shift in capital investment flow. It's also the university's vision to response to the ASEAN Economic Community (AEC), the regional cooperation among ASEAN nations, which will soon be implemented in 2015. The AEC aims to advance ASEAN's position in world economy, by creating collaborations between member nations through free trade agreement of products and services, the flow of skilled workers, and the cross-border capital market. This gives rise to the urgent demand for the development of highly skilled human resources with well-rounded international skill set.

Course Offered

http://www.inter.kmutnb.ac.th/wp-content/uploads/2017/02/RCourse-Description_International-College_KMUTNB.pdf

Program: Student Exchange

Academic Period

1st Semester: Early August-Mid December
2nd Semester/Spring : January-May

Minimum GPA

2.75

Quota

1 student

Minimum TOEFL

500 (TOEFL/EFL)

Living Cost*

\$714–1,196 USD / Month

Minimum IELTS

5.5 overall (IBT)

Deadline

1st Semester: Early April
2nd Semester: -

Scholarship

Accommodation & Health Insurance

*Living expenses reference:

<https://global.kmutt.ac.th/academics/exchange-programs/programs-of-study>

Grading System

Letter Grade	Grade Point
A	4.0
B+	3.5
B	3.0
C+	2.5
C	2.0
D+	1.5
D	1.0
F	0.0

Important Notes

For more detailed information, please visit bit.ly/its-student-exchange

KING MONGKUT'S UNIVERSITY OF TECHNOLOGY THONBURI



Thailand

KMUTT is all about academic excellence and energetic research culture in science, engineering and design. Of course, classroom learning is only a means, but certainly not the end and that is why we foster a life-long learning approach into our innovative curriculum and learning environment.

Course Offered

lms.postech.ac.kr -> English -> Learning Guide -> Courses

Program: Student Exchange

Academic Period

1st Semester/fall : Early August – Mid December
2nd Semester/spring : January – May

Minimum GPA

-

Quota

5 Students each semester

Minimum TOEFL

477 (TOEFL/EFL)

Living Cost*

\$499–978 USD/Month.

Minimum IELTS

5.5 overall (IBT)

Deadline

1st Semester/Fall : End of April
2nd Semester/Spring : Mid of October

*Living expenses reference:
<https://bit.ly/3jkTjW4>

Grading System

Information could be found at:

<https://global.kmutt.ac.th/academics/exchange-programs/inbound-exchange-student>

Important Notes

For more detailed information, please visit bit.ly/its-student-exchange

THE SIRINDHORN INTERNATIONAL INSTITUTE OF TECHNOLOGY THAMMASAT UNIVERSITY



Thailand

Sirindhorn International Institute of Technology (SIIT), Thammasat University, was established in 1992 in cooperation with Thammasat University, the Japan Federation of Economic Organizations (KEIDANREN) and the Federation of Thai Industries (FTI). SIIT's objectives are to produce highly qualified engineers and technologists, who are competent in advanced technology, proficient in English communication, and able to manage and carry out research in engineering and technology.

Course Offered

<https://docs.google.com/spreadsheets/d/1tu39IOSJlm0LqJ-l-xnYv9PUJ-O8iZk-ax5NccSquykY/edit#gid=0>

Program: Student Exchange

Academic Period

1st Semester: Early August-Mid December
2nd Semester : January-May

Quota

Unlimited

Living Cost*

\$350-693 USD / Month

Deadline

1st Semester: Early May
2nd Semester: Early of October

*Living expenses reference:

https://www.siiit.tu.ac.th/upload_images/untitled%20folder/Inter%204/SIIT%20Presentation%20-%20100462.pdf

Minimum GPA

2.75

Minimum TOEFL

477 (TOEFL/EFL)

Minimum IELTS

5.5 overall (IBT)

Grading System

Letter Grade	Grade Point	Significance
A	4.0	Excellent
B+	3.5	Excellent
B	3.0	Excellent
C+	2.5	Fair Good
C	2.0	Fair Good
D+	1.5	Fair Good
D	1.0	Minimum
F	0.0	Fail

Important Notes

For more detailed information, please visit bit.ly/its-student-exchange

ESKISEHIR TECHNICAL UNIVERSITY



Turkey

Eskişehir Technical University which was founded with the Law No. 7141 published in the Official Newspaper numbered 30425 on May 18, 2018, consists of 5 faculties, 2 vocational schools and 3 institutions at two campuses located in the center of Eskişehir which is well-known as a city of science, culture and youth.

Course Offered

<https://eskisehir.edu.tr/en/academics>

Program: Student Exchange

Academic Period

1st Semester/Fall : September-Mid January
2nd Semester/Spring : February-June

Quota

Max 2 students each semester

Living Cost*

\$354–600 USD/Month

Deadline

1st Semester/Fall : End of February
2nd Semester/Spring : –

*Living expenses reference:

<https://akts.eskisehir.edu.tr/en/ogrenci/sehirdeYasam>

Minimum GPA

-

Minimum TOEFL

477 (TOEFL/EFL)

Minimum IELTS

5.5 overall (IBT)

Scholarship

Mevlana Scholarship (1300 TL per month)

Grading System

Grade Point	Letter Grade
4.0	AA
3.7	AB
3.3	BA
3.0	BB
2.7	BC
2.3	CB
2.0	CC
1.7	CD
1.3	DC
1.0	CD
0.0	DC

Important Notes



Turkey

Süleyman Demirel University is a state university established in 1992 on a strong infrastructure related to higher education in Isparta and completed its institutionalization in the past period. The university, with its academic units, academic staff, number of students, physical capacity and scientific research; It has a distinguished place among the higher education institutions of our country with its social, cultural and sports activities. The university has 14 faculties providing undergraduate education, 2 colleges, 1 state conservatory, 4 vocational schools providing associate degree education, 6 graduate schools and 47 research and application centers. Most of the university buildings are in the central campus in Isparta.

Course Offered

<https://www.its.ac.id/international/wp-content/uploads/sites/66/2020/03/2019-2020-Courses-in-ENGLISH-SD%C3%9CSON-1.xlsx>

Program: Student Exchange

Academic Period

1st Semester/Fall : September-Mid January
2nd Semester/Spring : February-June

Minimum GPA

-

Quota

Max 2 students each semester

Minimum TOEFL

477 (TOEFL/EFL)

Living Cost*

\$313-604 USD/Month

Minimum IELTS

5.5 overall (IBT)

Deadline

1st Semester/Fall : End of February
2nd Semester/Spring : -

*Living expenses reference:

<https://ects.sdu.edu.tr/V2/Pages/ShowDetails.aspx?mID=16>

Grading System

Grade Point	Letter Grade
4.0	A
3.0	B
2.5	C
2.0	D
1.0	E
0.5	Fx
0.0	F

Important Notes

ISPARTA UNIVERSITY OF APPLIED SCIENCES

Turkey

Isparta University of Applied Sciences(IUAS) comprises of five faculties with a newly established Faculty of Business connected to IUAS Rectorate and Faculty of Agricultural Sciences and Technologies (formerly named as Faculty of Agriculture), Faculty of Forestry, Faculty of Technology and Faculty of Eğirdir Aquaculture whose connection has been changed from Süleyman Demirel University and connected to IUAS Rectorate. The new university has three Schools named as School of Eğirdir Tourism and Hotel Management whose connection has been changed from Süleyman Demirel University and connected to IUAS Rectorate, School of Yalvaç Büyükkutlu Applied Science and a newly established School of Foreign Languages connected to IUAS Rectorate.

Course Offered

<https://www.its.ac.id/international/wp-content/uploads/sites/66/2020/03/2019-2020-courses-in-english-26112019.xlsx>

Program: Student Exchange

Academic Period

1st Semester/Fall : September-Mid January
2nd Semester/Spring : February-June

Quota

2 students

Living Cost*

\$ 354-530 USD/Month

Deadline

1st Semester: Early May
2nd Semester: End of September

*Living expenses reference:

<https://erasmus.isparta.edu.tr/assets/uploads/sites/416/files/fact-sheet-23012020.pdf>

Minimum GPA

3.00

Minimum TOEFL

550 (TOEFL/EFL)

Minimum IELTS

6.0 overall (IBT)

Grading System

Grade Point	Numerical Grade	Letter Grade
4.0	90 – 100	A
3.0	80 – 89	B
2.0	70 – 79	C
1.5	65 – 69	D
1.0	60 – 64	E
0.5	50 – 59	Fx
0.0	0-49	F

Important Notes

For more detailed information, please visit bit.ly/its-student-exchange

ISTANBUL AYDIN UNIVERSITY



Turkey

It is not surprising to encounter the graduates of Istanbul Aydın University, which has taken the road with the slogan of "Towards a Bright Future", at the brightest spots of business life. Istanbul Aydın University is a city and campus university located in the center of Istanbul with its experienced academic staff who have gained a reputation for their scientific studies in the country and in the world. The first thing that will engage the attention when you step on campus is the vitality of it. Istanbul Aydın University where you can experience an activity every hour of the day, is dominated by constant energy and mobility.

Course Offered

- Industrial Engineering (S1): <https://intip.in/IndustrialEngineering>
- Electrical Engineering (S1): <https://intip.in/ElectricalEngineering>

Program: Student Exchange

Academic Period

1st Semester/Fall : September-Mid January
2nd Semester/Spring : February – June

Quota

Unlimited

Living Cost*

\$382-764 USD/month

Deadline

1st Semester/Fall : End of March
2nd Semester/Spring : Early of Oct

*Living expenses reference:

<https://ebs.aydin.edu.tr/index.iau?Page=YasamGiderleri&In=tr>

Minimum GPA

-

Minimum TOEFL

500 (TOEFL/EFL)

Minimum IELTS

5.5 overall (IBT)

Scholarship

Erasmus (based on the contract, non-guaranteed scholarship)

Grading System

Letter Grade	Numerical Grade	Grade Point
A	90-100	4.00
B	89-85	3.50
B	84-80	3.00
C	79-75	2.50
C	74-70	2.00
D	69-60	1.50
E	59-50	1.00
F-FX	49-40	0.50
F-FX	39-0	0.00

Important Notes

For more detailed information, please visit bit.ly/its-student-exchange

ISTANBUL TECHNICAL UNIVERSITY (ITU)



Turkey

Founded in 1773 with the name "Mühendishane-i Bahr-i Hümayun" (Imperial School of Naval Engineering) during the reign of Mustafa III, Istanbul Technical University is a prominent and pioneering university of engineering and architecture with many innovative studies in science, technology, research and development. Our university facilitates the knowledge and technology transfer to industries, management centers, and society. To do this, İTÜ has created many Techno-Science parks, incubation centers, entrepreneurship and innovation centers and technology transfer offices. This way, İTÜ offers a favorable environment for students to build a successful career in their professions, to improve themselves, to seek internship opportunities and to conduct research projects.

Course Offered

<https://intip.in/IstanbulTechnicalUniversity>

Program: Student Exchange

Academic Period

1st Semester/Fall : September – Mid January > 3
2nd Semester/Spring : February – June

Quota

Unlimited

Living Cost*

\$382-764 USD/Month

Deadline

1st Semester/Fall : Mid of March
2nd Semester/Spring : Mid of September

*Living expenses reference:

<https://intip.in/IstanbulTechnicalUniversity>

Minimum GPA

500 (TOEFL/EFL)

Minimum TOEFL

5.0 overall (IBT)

Minimum IELTS

Grading System

Letter Grade	Grade Point	Significance
AA	4.00	Excellent
BA	3.50	Good-Excellent
BB	3.00	Good
CB	2.50	Good-Satisfactory
CC	2.00	Satisfactory
DC	1.50	Satisfactory-Low Pass
DD	1.00	Low Pass
FF	0.00	Fail
VF	0.00	Failure without Midterm

Refers to: <https://intip.in/IstanbulTechnicalUniversity>

Important Notes

For more detailed information, please visit bit.ly/its-student-exchange



Denmark

The University of Southern Denmark (SDU) is a fusion from 1998. The University received its first students in Odense in September 1966. Since then, it has gone from strength to strength. SDU now have five faculties and about 32,000 students, more than 15% of whom come from abroad. More than 4,000 employees are divided between the main campus in Odense and regional campuses in Slagelse, Kolding, Esbjerg, Sønderborg and Copenhagen. Several international reports testify that we conduct world-class research.

Course Offered

<https://docs.google.com/spreadsheets/d/17wGILUE-v37tHYtCsyUldwwMEg86trWti33A5KGrbI8/edit#gid=0>

Program: Student Exchange

Academic Period

1st Semester/Fall : September-Mid January
2nd Semester/Spring : February-June

Minimum GPA

-

Quota

Unlimited

Minimum TOEFL

477 (TOEFL/EFL)

Living Cost*

\$700-1,234 USD/Month

Minimum IELTS

5.5 overall (IBT)

Deadline

1st Semester/Fall : Mid of March
2nd Semester/Spring : Mid of September

*Living expenses reference:

https://www.sdu.dk/en/uddannelse/internationale_studerende/practical_information/living_expenses

Grading System

Grade Point	Letter Grade
12	A
10	B
7	C
4	D
2	E
0	F
-3	Fx

Important Notes



THE INSTITUT SUPÉRIEUR D'ELECTRONIQUE DE PARIS

France

ISEP is a French engineering graduate school in digital technology, known as a "Grande École d'Ingénieurs". ISEP trains very high-level graduate engineers who receive a thorough training in Electronics, Telecommunications & Networks, Software Engineering, Signal-Image Processing and Humanities, providing them with the required knowledge and skills to meet the needs of businesses. Since 2008, ISEP has been offering an international program taught fully in English which allows international students to obtain the Engineering Master Degree. Thanks to a strong partnership with the companies in related industries, this program includes a professional internship.

Course Offered

<https://en.isep.fr/studying-at-isep/course-catalog/>

Program: Student Exchange

Academic Period

1st Semester/Fall : September-Mid January
2nd Semester/Spring : February-June

Quota

Unlimited

Living Cost*

\$850-1,421 USD/Month

Deadline

1st Semester/Fall : Mid of April
2nd Semester/Spring : Mid of October

**Living expenses reference:*

<https://www.oia.ntust.edu.tw/ezfiles/17/1017/img/1124/519169656.pdf>

Minimum GPA

> 3.0

Minimum TOEFL

550 (TOEFL/EFL)

Minimum IELTS

6.0 overall (IBT)

Grading System

Letter Grade	Numerical Grade	Significance
A	16-20	Outstanding
B+	14-16	Very Good
B	12-14	Good
C+	10-12	Satisfactory
C	<10	Sufficient

Important Notes

All incoming exchange students must have health insurance that covers the period of their stay in Korea. Students are required to purchase their own health insurance in their home country and submit proof of health insurance to us before coming to Korea. The insurance policy should cover sickness, accident, and health. Students should also make sure to know how the health insurance works if any medical problems occur.

In accordance with the requirements of the Korean Immigration Service and our dormitory regulation, all successful applicants are required to submit proof of an authorized tuberculosis test (through X-ray, skin, or blood) result that is taken within 45 days prior to their arrival in Korea. Students will be asked to attach the scanned copy of their tuberculosis test result on the online application later in February for Spring Semester and August for Fall Semester.

For more detailed information, please visit bit.ly/its-student-exchange

THE INSTITUT SUP'BIOTECH DE PARIS



France

Sup'Biotech is a private engineering school located in the Paris metropolitan area, specializing in the diverse fields of the Biotechnology sector. Sup'Biotech is part of the IONIS Institute of Technology's technology cluster. IONIS is France's leading private higher education group; its technology cluster also includes EPITA and Epitech, schools specializing in computer sciences and information technology, as well as IPSA, an aeronautics engineering school.

Course Offered

<https://intip.in/SupbiotechCourse>

Program: Student Exchange

Academic Period

1st Semester/Fall : September – Mid January
2nd Semester/Spring : February – June

Minimum GPA

>3.25

Quota

Unlimited

Minimum TOEFL

500 (TOEFL/EFL)

Living Cost*

\$850–1,421 USD/Month.

Minimum IELTS

6.0 overall (IBT)

Deadline

1st Semester/Fall : End of April
2nd Semester/Spring : End of September

**Living expenses reference:*
N/A

Grading System

N/A

Important Notes

For more detailed information, please visit bit.ly/its-student-exchange

UNIVERSITY OF TECHNOLOGY OF TROYES



France

The University of Technology of Troyes (Université de Technologie de Troyes or UTT) was established in 1994 and inaugurated by Jacques Chirac as one of a trio of universities of technology, set up by the University of Technology of Compiègne (the commune in Northern France where Troyes is located). It is now one of the largest engineering schools in the country. Inspired by the American University of Pennsylvania in Philadelphia, these three universities (including University of Technology of Compiègne and The University of Technology of Belfort-Montbéliard) blend the usual French university model with its schools of engineers (Grandes Ecoles). Because of this, the teaching is pitched between North American models and French traditions – students have the choice of which course to study, and do directed work (TDs) and practical work (TPs). The final engineering degree is equivalent to the Bac+5 format given by Grandes Ecoles.

Course Offered

<https://www.utt.fr/study-at-utt/courses-in-english>

Program: Student Exchange

Academic Period

1st Semester/Fall : September-Mid January
2nd Semester/Spring : February-June

Minimum GPA

2.75

Quota

Unlimited

Minimum TOEFL

477 (TOEFL/EFL)

Living Cost*

\$650-1,272 USD/Month

Minimum IELTS

5.5 overall (IBT)

Deadline

1st Semester/Fall : End of April
2nd Semester/Spring : Early of October

*Living expenses reference:

1. <https://www.utt.fr/study-at-utt/accommodation>

2. https://www.utt.fr/medias/fichier/brochure-uk_1554987989273-pdf?ID_FICHE=11883&INLINE=FALSE

Grading System

Distribution	Letter Grade	Significance
10% of students	A	Excellent
25% of students	B	Very Good
30% of students	C	Good
25% of students	D	Satisfactory
10% of students	E	Pass
	F/FX	Fail

Refers to: <https://www.utt.fr/study-at-utt/academic-programs>

Important Notes

For more detailed information, please visit bit.ly/its-student-exchange

HOCHSCHULE DARMSTADT UNIVERSITY OF APPLIED SCIENCES



Germany

Darmstadt University of Applied Sciences (Hochschule Darmstadt, h_da) puts science into action. With a student body of about 17,000, it is one of the largest and most distinguished universities of applied sciences in Germany. Its excellent reputation is the result of a scientifically grounded, real-world approach to higher education and the professional success of its graduates.

Course Offered

<https://www.its.ac.id/international/wp-content/uploads/sites/66/2020/03/English-taught-classes-2018-19.pdf>

Program: Student Exchange

Academic Period

1st Semester/Fall : October-February
2nd Semester/Spring : April-Early August

Quota

Unlimited

Living Cost*

\$644-1,243 USD/Month

Deadline

1st Semester/Fall : End of April
2nd Semester/Spring : Mid of October

*Living expenses reference:

<https://bit.ly/3jkTjW4>

Minimum GPA

-

Minimum TOEFL

500 (TOEFL/EFL)

Minimum IELTS

5.5 overall (IBT)

Scholarship

STIBET Scholarship
(a non-guaranteed scholarship
only for 1 student)

Grading System

- | | |
|---|---|
| 1 | Very good An excellent performance |
| 2 | Good A performance significantly above the average requirements |
| 3 | Satisfactory A performance which corresponds to average requirements |
| 4 | Sufficient A performance that despite deficiencies still meets the requirements |
| 5 | Fail A performance which does not meet the requirements because of its significant shortcomings |

Important Notes

For more detailed information, please visit bit.ly/its-student-exchange

SAINT PETERSBURG ELECTROTECHNICAL UNIVERSITY "LETI"



Russia

Saint Petersburg Electrotechnical University "LETI" is one of the world's largest education centers specializing in radio engineering, electrical engineering, electronics and computer science. University graduates get Bachelor's and Master's degree or specialist qualification. Today the University trains around 9000 students. Over 200 professors and PhDs work in the University. ETU "LETI" provides education in 19 scientific fields for Bachelors and 53 educational programs for Masters.

Course Offered

<https://www.its.ac.id/international/wp-content/uploads/sites/66/2020/10/Courses-Spring.xlsx>

Program: Student Exchange

Academic Period	Minimum GPA
-	2.75
Quota	Minimum TOEFL
Maximum 10 students	477 (TOEFL/EFL)
Living Cost*	Minimum IELTS
\$357-759 USD/Month	5.5 overall (IBT)
Deadline	-

*Living expenses reference:

https://oia.catholic.ac.kr/common/download.do?file_path=board/474/&file_name=29115_29639_20200929090231.pdf&file_name_org=ETU+LETI.+FACT+SHEET.+SPRING+2021.pdf

Grading System

Letter Grade	Numerical Grade
A	85-100
B	65-84
C	65-84
D	51-64
E	51-64
F	0-50
(P)	Pass

Refers to:

<https://etu.ru/en/study/dean-s-office/full-time-programs/academic-grading-system-in-russia>

Important Notes

For more detailed information, please visit bit.ly/its-student-exchange

AMSTERDAM UNIVERSITY OF APPLIED SCIENCES

FACULTY OF TECHNOLOGY



Netherland

At the Amsterdam University of Applied Sciences (AUAS), we educate tomorrow's professionals in a wide array of fields and disciplines of higher education. With our distinct focus on applied sciences, the AUAS enables students, lecturers and researchers to develop cutting-edge – and practical – knowledge and innovations.

Course Offered

<https://www.amsterdamuas.com/education/programmes/exchange-programmes/technology/technology.html>

Program: Student Exchange

Academic Period	Minimum GPA
1st Semester/Fall : September-Mid January 2nd Semester/Spring : February – June	-
Quota	Minimum TOEFL
Unlimited	477 (TOEFL/EFL)
Living Cost*	Minimum IELTS
\$709–1,381 USD/Month.	5.5 overall (IBT)
Deadline	
1st Semester/Fall : End of April 2nd Semester/Spring : Mid of September	
*Living expenses reference: https://intip.in/livingcostAUAS	
Grading System	
Grade Percentage	Letter Grade
10	Excellent
9	Very Good
8	Good
7	More than satisfactory
6	Satisfactory
5–1	Fail

Important Notes

For more detailed information, please visit bit.ly/its-student-exchange

HANZE UNIVERSITY OF APPLIED SCIENCES GRONINGEN

Netherlands

Hanze University of Applied Sciences is a large, comprehensive university of applied sciences that has been educating skilled and committed professionals for over two centuries. Hanze graduates enrich those they come into contact with, both individuals and society at large. They share their talents and move the world. This world has changed over the past two hundred years and our university of applied sciences has changed along with it.

Course Offered

<https://www.hanze.nl/eng/study-at-hanze/study-programmes/exchange-courses>

Program: Student Exchange

Academic Period

1st Semester/Fall : September-Mid January
2nd Semester/Spring : February-June

Minimum GPA

-

Quota

2-4 students each semester

Minimum TOEFL

477 (TOEFL/EFL)

Living Cost*

\$800-1,200 USD/Month

Minimum IELTS

5.5 overall (IBT)

Deadline

1st Semester/Fall : Early of May
2nd Semester/Spring : Early of October

**Living expenses reference:*

<https://www.hanze.nl/eng/study-at-hanze/studying-in-the-netherlands/cost-living-dutch-bank-account>

Grading System

In the Dutch grading system, 5.5 is the lowest pass grade and 10 is the highest possible grade.

More information could be found at:

<https://www.hanze.nl/eng/organisation/international-affairs/ects-grading-tables>

(Please refer to School of Architecture, Built Environment and Civil Engineering)

Important Notes

For more detailed information, please visit bit.ly/its-student-exchange

MEMORIAL UNIVERSITY OF NEWFOUNDLAND



Canada

At Memorial University more than 18,000 students from over 100 countries come together to discover. From the classics to advanced technology, Memorial offers certificate, diploma, undergraduate, graduate and postgraduate programs across four campuses and online. A global network of more than 90,000 accomplished alumni throughout the world strengthens Memorial University's capacity and reputation for leadership in research, teaching and public engagement.

Course Offered

<https://www.mun.ca/regoff/registration/course-offerings/index.php>
<https://www.mun.ca/regoff/calendar/>

Program: Student Exchange

Academic Period

1st Semester/Fall: September – December

Minimum GPA

-

Quota

Unlimited for non-scholarship students,
5 for scholarship students

Minimum TOEFL

530 (TOEFL/EFL)

Living Cost*

\$757–1,224 USD/Month

Minimum IELTS

6.0 overall (IBT)

Deadline

1st Semester/Fall : Mid of February

Scholarship

CANADA-ASEAN SEED
Scholarship

**Living expenses reference:*
<https://www.mun.ca/undergrad/money/index.php>

Grading System

Information could be found at:
<https://www.mun.ca/regoff/calendar/sectionNo=REGS-0661>

Important Notes

For more detailed information, please visit bit.ly/its-student-exchange



Canada

Educating and training more than 20,500 people each year in a diverse array of programs, Okanagan College is the region's largest higher education institution. Offerings range from bachelor degrees to diplomas, trades, vocational training, professional development, corporate training and adult basic education, giving students a step up in their careers.

Course Offered

<https://webapps-7.okanagan.bc.ca/ok/ClassFinder/default.aspx>

Program: Student Exchange

Academic Period

1st Semester/Fall: Sept – Dec

Quota

Unlimited for non-scholarship students,
5 for scholarship students

Living Cost*

\$710–1,130 USD/Month

Deadline

1st Semester/Fall : Mid of February

*Living expenses reference:

<https://intip.in/okanagancosts>

Grading System

Grade Percentage	Letter Grade
90–100%	A+
85–89%	A
80–84%	A-
76–79%	B+
72–75%	B
68–71%	B-
64–67%	C+
60–63%	C
55–59%	C-
50–54%	D
0–49%	F

Minimum GPA

-

Minimum TOEFL

530 (TOEFL/EFL)

Minimum IELTS

6.0 overall (IBT)

Scholarship

CANADA-ASEAN SEED
Scholarship

Important Notes

Frequently Asked Questions

How do I apply for an IEP?

For the registration and documents' submission, students can do this directly to the online channel that has been informed by ITS GE at the time of the IEP announcement. For more complete information, please kindly find it at the link: bit.ly/its-student-exchange.

I am a first-year student, can I join the IEP program?

You cannot, because you do not yet have a transcript.

Can I use any type of English certification, such as EFL // TOEFL ITP / TOEFL IBT / IELTS?

Each of the universities and programs may have different requirements in terms of types of certificates and the minimum score. Students are highly advised to read the document requirements thoroughly for each of the programs on the ITS GE website and or overseas partner universities.

Can I get a TOEFL / TEFL certificate at ITS GE?

No, please contact UPT Bahasa (Centre for Languages and Cultures) ITS.

Can the TEFL that I collect be in the form of a screenshot on the UPT Bahasa website?

For student exchanges, this must be in the form of a certificate. For short programs, some allow screenshots, please check the terms of each program.

Where can I get an active student certificate or certificate of enrollment?

You can access it on the student's integra account (integra.its.ac.id) to get an active student certificate that has a signature (in the form of a barcode) with the following steps:

- Login to the integra account
- Click S1 Academic
- Click Student Letter
- Click Active Student Certificate
- Fill in the data in the required column, select "other" (write the name of the program to be followed)
- Submit a letter and wait within 1-2 days for approval

Whom can I ask for a Recommendation Letter?

Recommendation letters can be submitted to lecturers in the department/faculty the student is from. It is hoped that the giver of the recommendation letter is someone who knows the students well enough.

If I want to take part in student exchange, can I apply for leave?

No, students must remain registered as active ITS students because at the end of the IEP program students must transfer credits (credits).

Can I consult ITS GE to find out what courses can be transferred?

No, please consult with your respective departments to discuss the possible courses that can be transferred.

How can I find out which courses that are available to be transferred to the host universities?

The courses that are available for the transfer may vary depending on the program and the destination university. Some are possible for certain faculties, some are not. All information is posted on the ITS GE website. Students are also advised to check the referral links provided in each of the IEP posts.

What if I still have problems and are confused about the IEP registration process?

Please contact the ITS GE Official Account. However, please make sure that you have read the information provided carefully. Your query will not be responded if the information you need is clearly stated on the website.

How to calculate living expenses and other expenses during the program?

Prices, fees, and the exchange rate can change on a day-to-day basis. You are advised to calculate your own estimated cost of living by referring to the latest information from trusted sources. Please also note that the living costs hugely vary depending on location and the personal lifestyle you have.

Will ITS Global Engagement help with visas?

No. ITS GE only helps you to provide a cover letter to get the visa. Other required documents or processes in the visa application must be handled by the students. Please be informed to also check the official information for visa application in your destined country.

How long is the duration of the IEP?

The duration of IEP is mainly 4-6 months. However, the duration of each of the programs may vary.

Frequently Asked Questions

Editor

Octaviyanti Dwi Wahyurini

Authors

Muhammad Wahyu Islami Pratama Maundu

Bilqis Oktaviani Putri

Muhammad Hasan

Design

Saraswati Puspito Nugroho

Layout

Intan Citra Phonskaningtyas

Zulfiqar Rahman Aji

Zulfahmi Hawali

Cover

I Nyoman Tri Sendyana