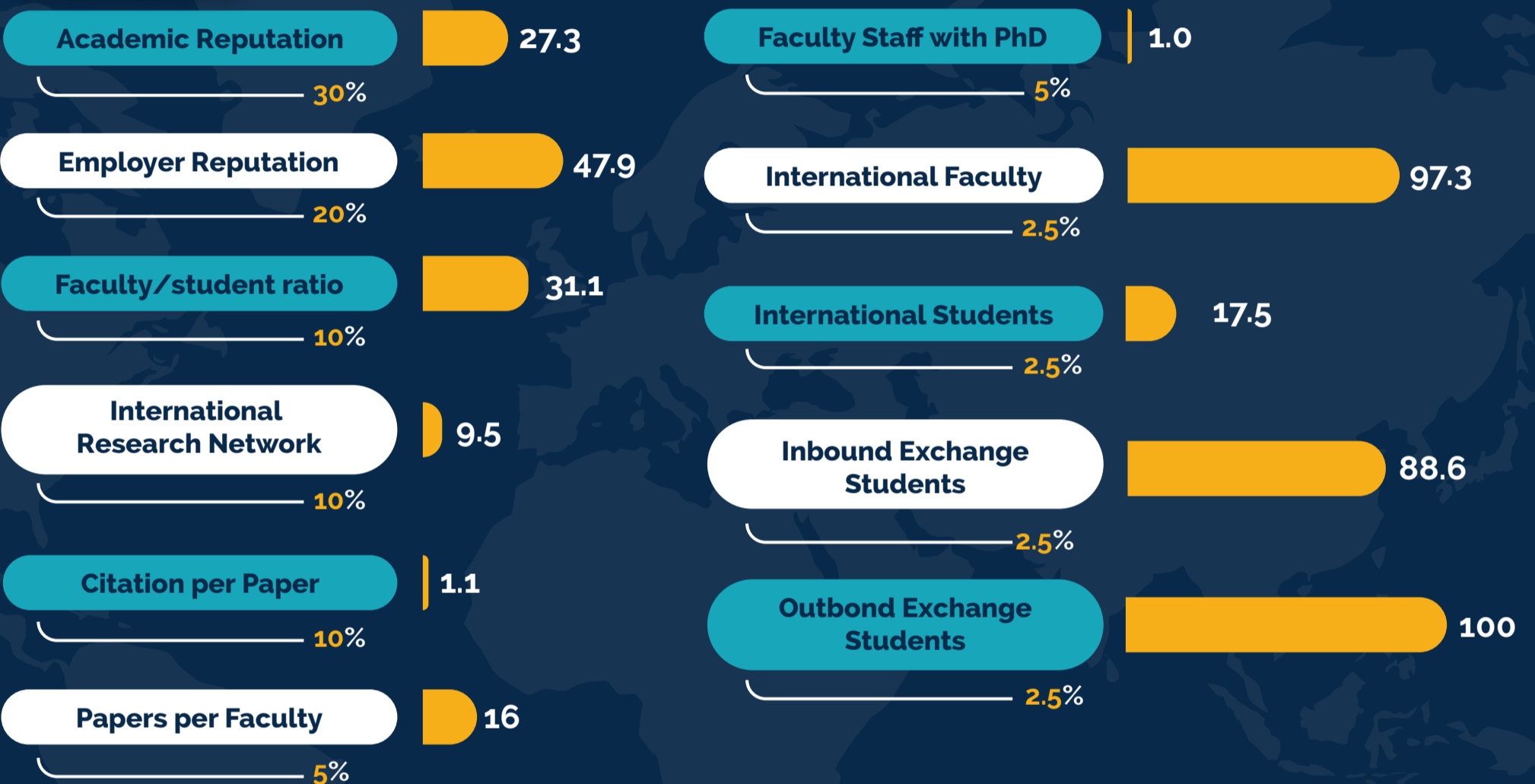




ITS' Achievement in QS - Asia University Rankings 2022

Indicators



Asia Rank



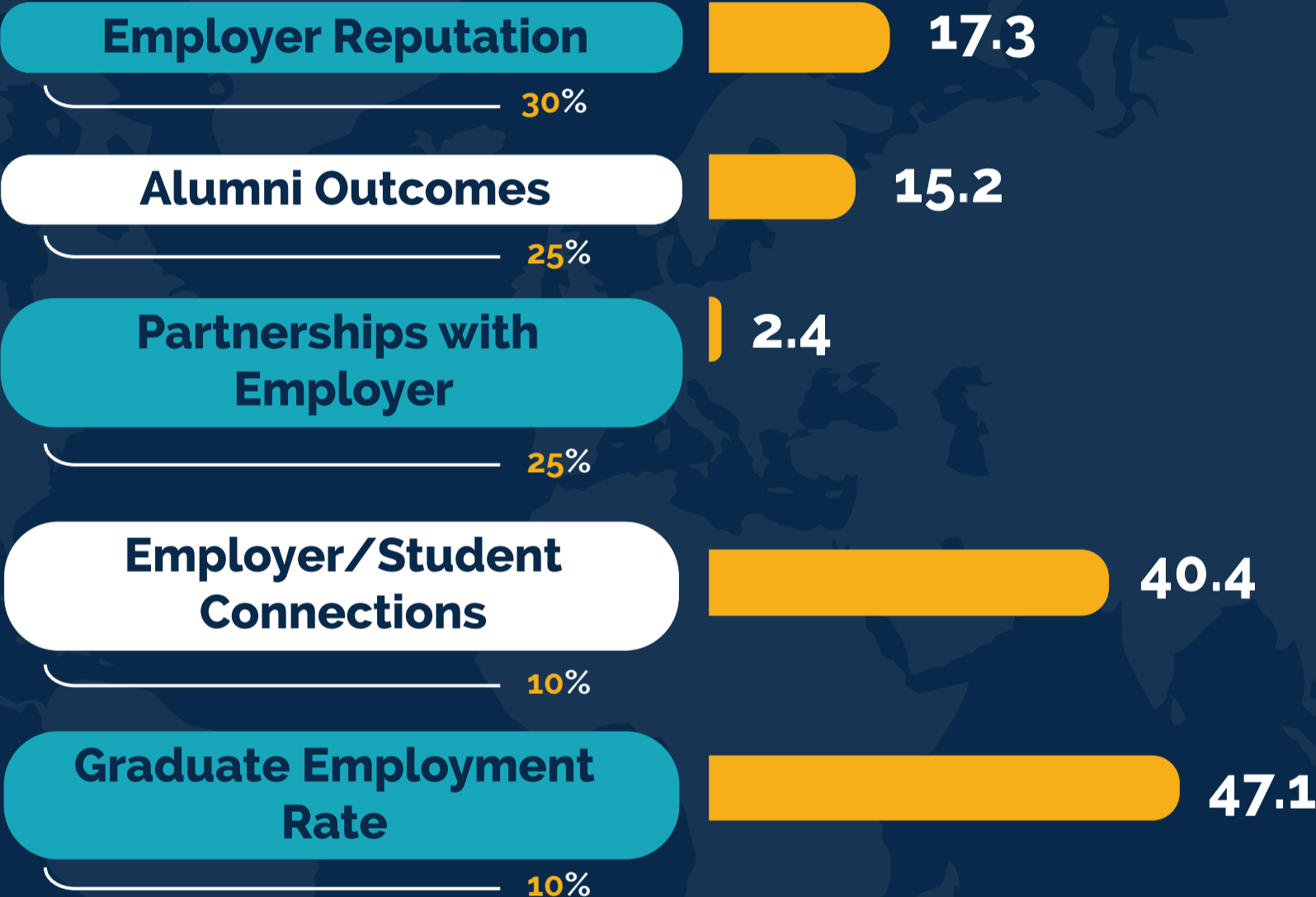
Country Rank



Further Information

ITS' Achievement in QS - Graduate Employability Rankings 2022

Indicators



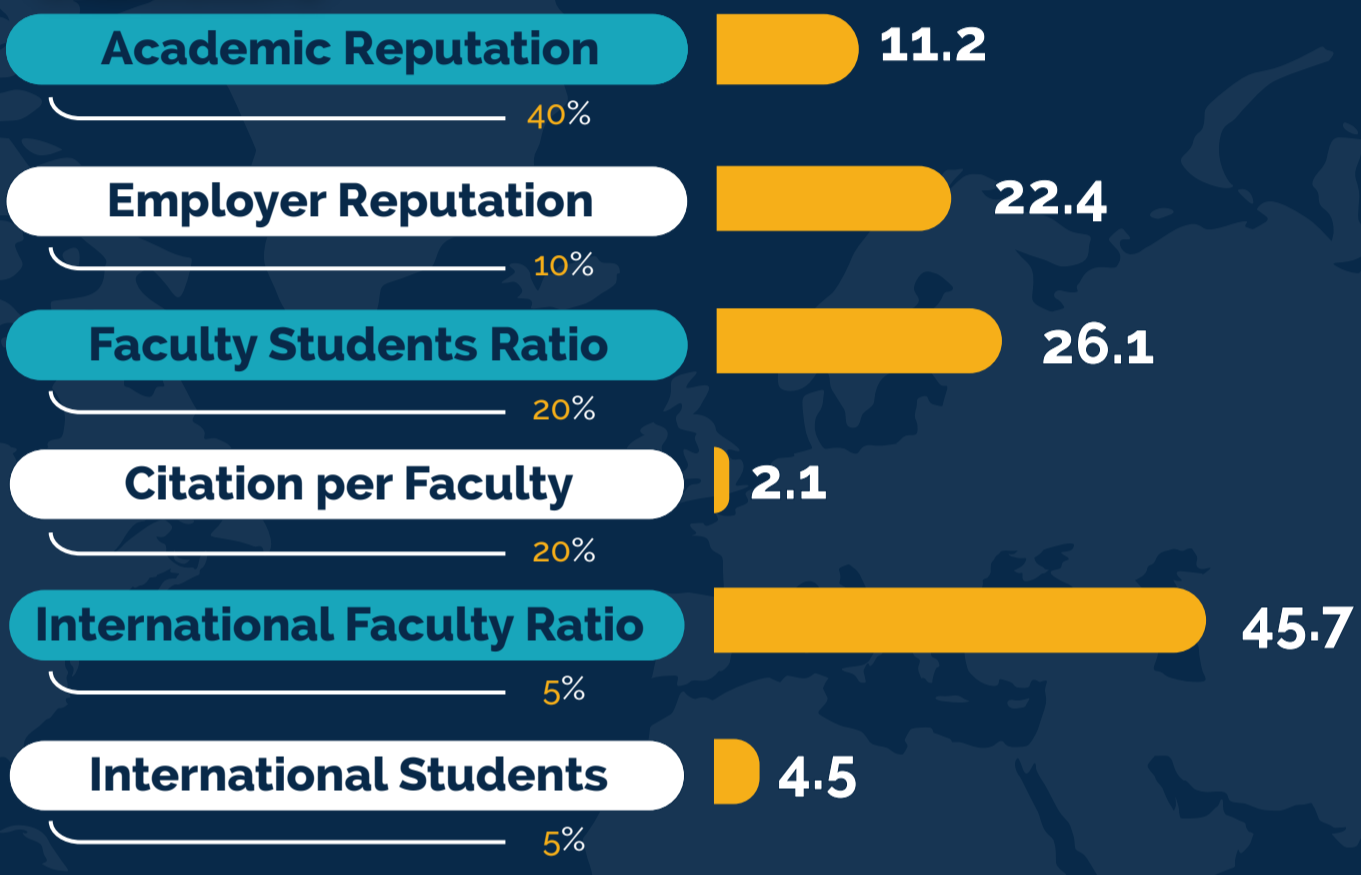
World Rank



Further Information

ITS' Achievement in QS - World University Rankings 2022

Indicators



World Rank



Country Rank



Further Information

ITS' Achievements in QS World University Rankings - By Subject 2022

=277

**Engineering & Technology
(Broad Subject Area)**

Broad Subject Area Indicators

Academic Reputation

40%

Employer Reputation

30%

Citations Per Paper

10%

H-Index

10%

International Research Network

10%

Specific Subject Area Indicators

Academic Reputation

40%

Employer Reputation

30%

Citations Per Paper

15%

H-Index

15%

**301
-
350**

**Chemical
Engineering**

**301
-
350**

**Mechanical,
Aeronautical
& Manufacturing**

**351
-
400**

**Computer Science
& Information Systems**

**351
-
400**

**Electrical &
Electronic**

Broad Subject Area

Specific Subject Area

Further Information

@itsinternationaloffice ITS International Office /ioits @its_io

wcu@its.ac.id <https://www.its.ac.id/wcu/>